



**Water Monitoring Result at C7 - Windsor House  
Mid-Flood Tide**

Date	Time	Weather Condition	Sampling Depth		Water Temperature		pH			Salinity		DO Saturation		DO		Turbidity		Suspended Solids						
			m		°C		-		ppt		%		mg/L		NTU		mg/L							
					Value	Average	Value	Average	Value	Average	Value	Average	Value	Average	Value	Average	Value	Average						
30/11/2015	12:05	Fine	Middle	-	24.40	24.40	24.55	8.32	8.32	8.33	31.65	31.65	31.79	84.8	87.9	87.1	5.88	6.09	6.03	6.10	6.00	6.00	3	3.50
	12:07		Middle	-	24.70	24.70		8.33	8.33		31.92	31.92		87.9	87.6		6.09	6.07		5.94	5.94		4	
2/12/2015	16:22	Fine	Middle	-	24.60	24.60	24.60	8.31	8.31	8.32	32.08	32.08	32.08	87.1	88.3	87.5	6.04	6.12	6.07	4.58	4.80	4.74	3	3.50
	16:24		Middle	-	24.60	24.60		8.33	8.33		32.08	32.08		87.6	87.1		6.07	6.04		4.84	4.73		4	
4/12/2015	15:04	Fine	Middle	-	23.70	23.70	23.70	8.39	8.39	8.40	32.47	32.47	32.48	76.3	74.3	73.6	5.36	5.22	5.17	5.41	5.34	5.34	6	5.00
	15:06		Middle	-	23.70	23.70		8.40	8.40		32.48	32.48		72.4	71.2		5.09	5.00		5.38	5.23		4	
7/12/2015	15:45	Fine	Middle	-	23.20	23.20	23.10	8.35	8.35	8.38	32.97	32.97	32.98	95.1	94.5	94.1	6.74	6.70	6.67	4.51	4.52	4.52	2	2.00
	15:47		Middle	-	23.00	23.00		8.41	8.41		32.98	32.98		93.8	92.9		6.65	6.59		4.53	4.51		2	
9/12/2015	17:10	Rainy	Middle	-	21.80	21.80	21.75	8.35	8.35	8.38	32.90	32.90	32.91	87.8	88.3	87.9	6.37	6.40	6.38	7.78	7.82	7.70	8	8.50
	17:12		Middle	-	21.70	21.70		8.40	8.40		32.92	32.92		87.4	88.0		6.35	6.39		7.61	7.60		9	
11/12/2015	14:56	Fine	Middle	-	23.30	23.30	23.35	8.40	8.40	8.40	32.58	32.58	32.59	67.7	66.9	66.9	4.79	4.73	4.73	4.68	4.68	4.75	<2	<2
	14:58		Middle	-	23.40	23.40		8.40	8.40		32.60	32.60		66.6	66.4		4.71	4.69		4.81	4.81		<2	
14/12/2015	10:30	Cloudy	Middle	-	22.60	22.60	22.55	8.36	8.36	8.37	32.82	32.82	32.83	81.3	83.1	83.2	5.81	5.94	5.95	3.95	3.95	3.96	3	3.50
	10:32		Middle	-	22.50	22.50		8.38	8.38		32.84	32.84		84.0	84.5		6.01	6.05		3.97	3.98		4	
16/12/2015	11:30	Fine	Middle	-	21.40	21.40	21.30	8.38	8.38	8.39	32.80	32.80	32.81	86.0	87.0	86.5	6.28	6.36	6.32	6.39	6.40	6.42	9	9.00
	11:32		Middle	-	21.20	21.20		8.39	8.39		32.82	32.82		87.0	85.9		6.36	6.29		6.43	6.45		9	
18/12/2015	15:54	Fine	Middle	-	20.80	20.80	20.80	8.36	8.36	8.37	32.80	32.80	32.82	84.8	84.3	84.2	6.26	6.23	6.22	8.00	8.00	8.01	9	8.50
	15:56		Middle	-	20.80	20.80		8.37	8.37		32.84	32.84		83.6	84.2		6.17	6.22		8.02	8.03		8	
21/12/2015	14:45	Fine	Middle	-	20.80	20.80	20.85	8.30	8.30	8.32	32.71	32.71	32.71	84.9	83.5	84.5	6.27	6.17	6.23	6.81	6.71	6.72	8	7.00
	14:47		Middle	-	20.90	20.90		8.34	8.34		32.70	32.70		84.6	84.8		6.25	6.21		6.69	6.66		6	
23/12/2015	15:30	Cloudy	Middle	-	21.20	21.20	21.25	8.17	8.17	8.23	32.41	32.41	32.41	89.2	91.1	90.6	6.55	6.69	6.65	4.59	4.59	4.62	5	5.50
	15:32		Middle	-	21.30	21.30		8.28	8.28		32.40	32.40		90.7	91.3		6.66	6.70		4.65	4.65		6	
26/12/2015	6:47	Cloudy	Middle	-	19.90	19.90	19.85	8.36	8.36	8.37	32.49	32.49	32.51	79.9	80.8	80.1	6.02	6.09	6.04	2.19	2.21	2.26	<2	<2
	6:48		Middle	-	19.80	19.80		8.38	8.38		32.52	32.52		80.2	79.6		6.04	6.00		2.27	2.38		<2	

Remarks:  
Single underline denotes exceedance over Action Level.  
Double underline denotes exceedance over Limit Level.



**Water Monitoring Result at C1 - HKCEC Extension  
Mid-Flood Tide**

Date	Time	Weather Condition	Sampling Depth		Water Temperature		pH			Salinity		DO Saturation		DO		Turbidity		Suspended Solids						
			m		°C		-		ppt		%		mg/L		NTU		mg/L							
					Value	Average	Value	Average	Value	Average	Value	Average	Value	Average	Value	Average	Value	Average						
30/11/2015	11:20	Fine	Middle	3.0	23.80	23.80	23.80	8.39	8.39	8.39	32.21	32.21	32.22	83.8	85.7	84.9	5.88	6.02	5.96	7.49	7.36	7.31	4	4.00
	11:22		Middle	3.0	23.80	23.80		8.39	8.39		32.23	32.23		84.5	85.4		5.93	6.00		7.18	7.19		4	
2/12/2015	15:31	Fine	Middle	2.5	24.10	24.10	24.10	8.38	8.38	8.38	32.32	32.32	32.33	74.6	73.1	72.6	5.21	5.10	5.07	5.75	5.80	5.79	4	4.00
	15:33		Middle	2.5	24.10	24.10		8.38	8.38		32.33	32.33		71.8	71.0		5.01	4.96		5.80	5.79		4	
4/12/2015	14:20	Fine	Middle	2.5	22.90	22.90	22.85	8.42	8.42	8.43	32.70	32.70	32.71	78.0	76.9	77.2	5.56	5.48	5.51	7.14	7.10	7.09	5	5.00
	14:22		Middle	2.5	22.80	22.80		8.43	8.43		32.71	32.71		77.4	76.4		5.54	5.44		7.07	7.05		5	
7/12/2015	14:56	Fine	Middle	2.5	22.20	22.20	22.20	8.48	8.48	8.48	33.05	33.05	33.06	75.4	73.7	73.2	5.42	5.30	5.26	5.89	5.83	5.86	3	3.00
	14:58		Middle	2.5	22.20	22.20		8.48	8.48		33.06	33.06		72.3	71.3		5.20	5.13		5.84	5.87		3	
9/12/2015	16:07	Rainy	Middle	2.5	21.60	21.60	21.60	8.46	8.46	8.46	32.54	32.54	32.55	77.5	76.1	75.0	5.65	5.54	5.46	7.89	8.05	7.99	8	7.00
	16:09		Middle	2.5	21.60	21.60		8.46	8.46		32.55	32.55		73.7	72.6		5.37	5.29		7.79	8.22		6	
11/12/2015	16:47	Fine	Middle	2.5	21.90	21.90	21.90	8.43	8.43	8.43	32.84	32.84	32.84	75.1	74.9	74.4	5.44	5.42	5.38	4.81	4.68	4.78	2	2.50
	16:49		Middle	2.5	21.90	21.90		8.43	8.43		32.84	32.84		74.3	73.2		5.38	5.29		4.82	4.82		3	
14/12/2015	9:40	Cloudy	Middle	3.0	21.70	21.70	21.70	8.44	8.44	8.44	32.97	32.97	32.98	83.9	85.4	84.4	6.09	6.20	6.12	8.56	8.47	8.48	8	8.00
	9:42		Middle	3.0	21.70	21.70		8.44	8.44		32.98	32.98		84.3	83.8		6.12	6.08		8.45	8.44		8	
16/12/2015	10:40	Fine	Middle	2.5	19.90	19.90	19.90	8.45	8.45	8.45	32.91	32.91	32.92	73.6	73.1	72.8	5.52	5.49	5.46	8.11	7.80	7.89	8	8.00
	10:42		Middle	2.5	19.90	19.90		8.45	8.45		32.93	32.93		72.5	71.8		5.44	5.38		7.84	7.80		8	
18/12/2015	10:44	Fine	Middle	2.5	19.10	19.10	19.10	8.42	8.42	8.42	32.84	32.84	32.86	75.0	74.8	75.7	5.71	5.69	5.76	6.34	6.41	6.40	4	4.50
	10:46		Middle	2.5	19.10	19.10		8.42	8.42		32.87	32.87		76.0	77.0		5.78	5.87		6.42	6.42		5	
21/12/2015	16:48	Fine	Middle	3.0	20.10	20.10	15.08	8.43	8.43	8.43	32.92	32.92	32.92	87.1	87.9	87.2	6.51	6.57	6.51	5.58	5.53	5.53	2	2.00
	16:50		Middle	3.0	0.00	20.10		8.43	8.43		32.92	32.92		87.2	86.4		6.52	6.45		5.49	5.51		2	
23/12/2015	16:55	Cloudy	Middle	2.5	20.60	20.60	20.65	8.39	8.39	8.39	32.73	32.73	32.74	82.5	81.8	81.4	6.11	6.06	6.03	6.20	6.18	6.27	6	5.50
	16:57		Middle	2.5	20.70	20.70		8.39	8.39		32.74	32.74		81.1	80.1		6.01	5.93		6.28	6.41		5	
26/12/2015	6:07	Cloudy	Middle	2.5	19.20	19.20	19.20	8.38	8.38	8.39	32.00	32.00	32.00	70.3	70.9	70.7	5.37	5.41	5.40	3.28	3.55	3.49	4	3.00
	6:08		Middle	2.5	19.20	19.20		8.40	8.39		32.00	32.00		70.8	70.8		5.41	5.41		3.61	3.50		2	

Remarks:  
Single underline denotes exceedance over Action Level.  
Double underline denotes exceedance over Limit Level.



**Water Monitoring Result at P1 - HKCEC Phase I  
Mid-Flood Tide**

Date	Time	Weather Condition	Sampling Depth		Water Temperature		pH			Salinity		DO Saturation		DO		Turbidity		Suspended Solids						
			m		°C		-		ppt		%		mg/L		NTU		mg/L							
					Value	Average	Value	Average	Value	Average	Value	Average	Value	Average	Value	Average	Value	Average						
30/11/2015	11:00	Fine	Middle	3.0	23.90	23.90	23.90	8.34	8.34	8.35	32.04	32.04	32.04	88.4	89.8	88.7	6.20	6.30	6.22	6.27	6.41	6.38	4	4.00
	11:02		Middle	3.0	23.90	23.90		8.36	8.36		32.04	32.04		88.7	87.8		6.22	6.16		6.42	6.40		4	
2/12/2015	15:15	Fine	Middle	2.5	24.30	24.30	24.40	8.28	8.28	8.30	32.47	32.47	32.44	81.9	81.7	81.8	5.69	5.67	5.68	6.88	7.00	6.94	4	4.00
	15:17		Middle	2.5	24.50	24.50		8.32	8.32		32.40	32.40		82.3	81.3		5.71	5.64		6.97	6.90		4	
4/12/2015	14:04	Fine	Middle	2.5	22.70	22.70	22.70	8.27	8.27	8.30	32.58	32.58	32.58	78.7	77.2	77.3	5.63	5.52	5.53	5.76	5.75	5.73	4	3.50
	14:06		Middle	2.5	22.70	22.70		8.33	8.33		32.57	32.57		76.8	76.6		5.49	5.48		5.71	5.70		3	
7/12/2015	14:40	Fine	Middle	2.5	22.10	22.10	22.05	8.43	8.43	8.44	33.10	33.10	33.12	79.5	80.9	81.1	5.73	5.83	5.84	4.29	4.27	4.28	3	3.50
	14:42		Middle	2.5	22.00	22.00		8.44	8.44		33.13	33.13		82.7	81.1		5.93	5.85		4.27	4.29		4	
9/12/2015	15:51	Rainy	Middle	2.5	21.30	21.30	21.25	8.37	8.37	8.39	32.77	32.77	32.77	77.5	75.4	75.3	5.68	5.53	5.52	5.62	5.62	5.62	6	5.00
	15:53		Middle	2.5	21.20	21.20		8.41	8.41		32.77	32.77		74.7	73.4		5.47	5.38		5.62	5.63		4	
11/12/2015	16:31	Fine	Middle	2.5	21.80	21.80	21.85	8.37	8.37	8.38	33.00	33.00	32.99	76.9	76.9	76.2	5.57	5.56	5.51	5.64	5.48	5.49	3	3.00
	16:33		Middle	2.5	21.90	21.90		8.39	8.39		32.97	32.97		76.3	74.7		5.52	5.40		5.44	5.38		3	
14/12/2015	9:15	Cloudy	Middle	3.0	21.80	21.80	21.80	8.31	8.31	8.34	32.79	32.79	32.72	91.4	89.7	90.5	6.63	6.50	6.56	6.92	6.90	6.81	5	5.00
	9:17		Middle	3.0	21.80	21.80		8.37	8.37		32.65	32.65		90.7	90.0		6.57	6.52		6.71	6.70		5	
16/12/2015	10:24	Fine	Middle	2.5	19.20	19.20	19.15	8.43	8.43	8.43	32.89	32.89	32.90	74.2	74.0	73.5	5.65	5.63	5.59	6.29	6.29	6.28	4	4.50
	10:26		Middle	2.5	19.10	19.10		8.43	8.43		32.90	32.90		73.4	72.2		5.59	5.50		6.29	6.25		5	
18/12/2015	10:28	Fine	Middle	2.5	17.70	17.70	17.70	8.38	8.38	8.39	32.88	32.88	32.91	77.0	76.2	76.2	6.02	5.96	5.94	6.83	6.83	6.83	9	9.00
	10:30		Middle	2.5	17.70	17.70		8.40	8.40		32.94	32.94		75.7	75.7		5.92	5.87		6.83	6.83		9	
21/12/2015	16:32	Fine	Middle	3.0	20.10	20.10	20.20	8.30	8.30	8.34	32.89	32.89	32.89	90.6	89.0	87.7	6.68	6.64	6.52	3.51	3.51	3.51	4	3.50
	16:34		Middle	3.0	20.30	20.30		8.37	8.37		32.88	32.88		84.9	86.1		6.33	6.42		3.51	3.51		3	
23/12/2015	16:39	Cloudy	Middle	2.5	21.00	21.00	21.05	8.15	8.15	8.21	32.86	32.86	32.83	84.1	82.8	83.2	6.18	6.09	6.06	5.65	5.65	5.62	6	6.50
	16:41		Middle	2.5	21.10	21.10		8.27	8.27		32.79	32.79		84.7	81.1		6.00	5.96		5.72	5.47		7	
26/12/2015	5:47	Cloudy	Middle	2.5	19.10	19.10	19.10	8.41	8.41	8.42	32.36	32.37	32.36	72.8	73.3	73.3	5.56	5.60	5.60	3.47	3.11	3.20	4	4.50
	5:48		Middle	2.5	19.10	19.10		8.42	8.42		32.36	32.36		73.4	73.5		5.61	5.62		3.09	3.14		5	

Remarks:  
 Single underline denotes exceedance over Action Level.  
 Double underline denotes exceedance over Limit Level.



**Water Monitoring Result at P3 - APA  
Mid-Flood Tide**

Date	Time	Weather Condition	Sampling Depth		Water Temperature			pH			Salinity			DO Saturation			DO			Turbidity			Suspended Solids	
			m		°C		-		ppt		%		mg/L		NTU		mg/L							
					Value	Average	Value	Average	Value	Average	Value	Average	Value	Average	Value	Average	Value	Average	Value	Average				
30/11/2015	11:05	Fine	Middle	3.0	23.70	23.70	23.75	8.36	8.36	8.37	32.03	32.03	32.04	83.4	84.1	83.8	5.87	5.92	5.90	5.32	5.43	5.39	4	4.50
	11:07		Middle	3.0	23.80	23.80		8.37	8.37		32.04	32.04		83.7	84.0		5.89	5.91		5.47	5.34		5	
2/12/2015	15:19	Fine	Middle	2.5	24.20	24.20	24.25	8.34	8.34	8.35	32.35	32.35	32.35	76.8	75.4	74.9	5.35	5.25	5.22	6.55	6.46	6.33	4	5.00
	15:21		Middle	2.5	24.30	24.30		8.35	8.35		32.34	32.34		74.1	73.2		5.16	5.10		6.18	6.13		6	
4/12/2015	14:08	Fine	Middle	2.5	22.60	22.60	22.60	8.35	8.35	8.36	32.72	32.72	32.65	80.9	80.5	79.8	5.79	5.76	5.71	5.26	5.21	5.22	6	5.00
	14:10		Middle	2.5	22.60	22.60		8.37	8.37		32.57	32.57		80.0	77.8		5.73	5.57		5.20	5.20		4	
7/12/2015	14:44	Fine	Middle	2.5	22.20	22.20	22.20	8.45	8.45	8.45	33.05	33.05	33.05	73.2	71.7	71.6	5.25	5.14	5.14	4.20	4.00	3.96	4	3.50
	14:46		Middle	2.5	22.30	22.10		8.45	8.45		33.04	33.04		70.9	70.5		5.09	5.06		3.82	3.82		3	
9/12/2015	15:55	Rainy	Middle	2.5	21.50	21.50	21.50	8.42	8.42	8.43	32.83	32.83	32.83	69.4	68.5	67.8	5.06	4.99	4.94	6.42	6.54	6.39	3	4.00
	15:57		Middle	2.5	21.50	21.50		8.43	8.43		32.83	32.83		67.1	66.3		4.89	4.83		6.29	6.29		5	
11/12/2015	16:35	Fine	Middle	2.5	21.40	21.40	21.40	8.41	8.41	8.41	32.93	32.93	32.92	74.4	73.5	73.5	5.44	5.37	5.37	4.56	4.55	4.52	4	3.50
	16:37		Middle	2.5	21.40	21.40		8.41	8.41		32.90	32.90		73.1	72.8		5.34	5.31		4.56	4.40		3	
14/12/2015	9:20	Cloudy	Middle	3.0	21.70	21.70	21.70	8.39	8.39	8.39	32.40	32.40	32.64	86.2	86.4	85.8	6.26	6.27	6.23	7.50	7.51	7.57	5	5.50
	9:22		Middle	3.0	21.70	21.70		8.39	8.39		32.87	32.87		85.4	85.2		6.20	6.19		7.60	7.67		6	
16/12/2015	10:28	Fine	Middle	2.5	19.70	19.70	19.65	8.43	8.43	8.43	32.88	32.88	32.91	77.6	76.3	76.5	5.85	5.75	5.77	7.14	7.02	7.02	4	5.00
	10:30		Middle	2.5	19.60	19.60		8.43	8.43		32.93	32.93		75.8	76.4		5.71	5.76		6.98	6.93		6	
18/12/2015	10:32	Fine	Middle	2.5	18.50	18.40	18.43	8.41	8.41	8.41	32.88	32.88	32.90	75.3	75.0	74.9	5.81	5.79	5.78	6.82	6.92	6.96	7	8.00
	10:34		Middle	2.5	18.40	18.40		8.41	8.41		32.91	32.91		74.8	74.3		5.77	5.73		7.06	7.05		9	
21/12/2015	16:36	Fine	Middle	3.0	20.10	20.10	20.15	8.38	8.38	8.39	32.87	32.87	32.87	83.3	86.7	86.3	6.22	6.48	6.44	4.41	4.48	4.50	<2	<2
	16:38		Middle	3.0	20.20	20.20		8.39	8.39		32.87	32.87		87.7	87.3		6.55	6.52		4.55	4.56		4.50	
23/12/2015	16:43	Cloudy	Middle	2.5	21.20	21.20	21.00	8.29	8.29	8.32	32.61	32.61	32.66	84.8	85.4	84.2	6.26	6.31	6.22	7.28	7.24	7.32	6	5.50
	16:45		Middle	2.5	20.80	20.80		8.34	8.34		32.71	32.71		84.6	81.8		6.26	6.05		6.22	7.36		7.40	
26/12/2015	5:52	Cloudy	Middle	2.5	19.10	19.10	19.10	8.30	8.30	8.33	32.01	32.01	32.02	70.8	71.8	72.1	5.42	5.49	5.52	3.36	3.38	3.38	4	5.00
	5:53		Middle	2.5	19.10	19.10		8.35	8.35		32.02	32.02		73.3	72.6		5.61	5.55		3.35	3.41		6	

Remarks:  
Single underline denotes exceedance over Action Level.  
Double underline denotes exceedance over Limit Level.



**Water Monitoring Result at P4 - SOC  
Mid-Flood Tide**

Date	Time	Weather Condition	Sampling Depth		Water Temperature			pH			Salinity		DO Saturation		DO		Turbidity		Suspended Solids					
			m		°C		-		ppt		%		mg/L		NTU		mg/L							
					Value	Average	Value	Average	Value	Average	Value	Average	Value	Average	Value	Average	Value	Average						
30/11/2015	11:10	Fine	Middle	3.0	23.80	23.80	23.80	8.37	8.37	8.37	32.07	32.07	32.11	82.0	82.5	82.1	5.76	5.80	5.77	6.50	6.47	6.46	5	6.00
	11:12		Middle	3.0	23.80	23.80		8.37	8.37		32.14	32.14		82.4	81.3		5.79	5.71		6.45	6.43		7	
2/12/2015	15:23	Fine	Middle	2.5	24.10	24.10	24.10	8.36	8.36	8.37	32.34	32.34	32.34	74.3	74.6	74.3	5.19	5.21	5.19	5.74	5.50	5.43	3	3.50
	15:25		Middle	2.5	24.10	24.10		8.37	8.37		32.34	32.34		74.3	73.8		5.19	5.15		5.25	5.24		4	
4/12/2015	14:12	Fine	Middle	2.5	22.60	22.60	22.60	8.38	8.38	8.39	32.61	32.61	32.63	81.3	80.6	79.1	5.82	5.77	5.66	6.13	6.10	6.06	3	2.50
	14:14		Middle	2.5	22.60	22.60		8.40	8.40		32.64	32.64		77.7	76.8		5.56	5.49		6.06	5.96		2	
7/12/2015	14:48	Fine	Middle	2.5	22.10	22.10	22.10	8.46	8.46	8.47	33.12	33.12	33.13	74.7	73.7	73.8	5.38	5.30	5.32	4.38	4.47	4.42	4	4.00
	14:50		Middle	2.5	22.10	22.10		8.47	8.47		33.13	33.13		73.6	73.3		5.30	5.28		4.48	4.35		4	
9/12/2015	15:59	Rainy	Middle	2.5	21.40	21.40	21.40	8.45	8.45	8.45	32.70	32.70	32.70	77.5	76.5	75.7	5.67	5.60	5.54	5.76	5.88	5.80	5	5.00
	16:01		Middle	2.5	21.40	21.40		8.45	8.45		32.70	32.70		75.2	73.6		5.50	5.38		5.89	5.68		5	
11/12/2015	16:39	Fine	Middle	2.5	21.80	21.80	21.80	8.42	8.42	8.42	32.82	32.82	32.83	78.1	77.2	77.9	5.66	5.59	5.64	4.82	4.83	4.87	<2	<2
	16:41		Middle	2.5	21.80	21.80		8.42	8.42		32.84	32.84		77.6	78.5		5.63	5.69		4.92	4.92		<2	
14/12/2015	9:25	Cloudy	Middle	3.0	21.60	21.60	21.60	8.41	8.41	8.42	32.97	32.97	32.97	85.0	85.9	84.8	6.18	6.25	6.17	8.83	8.70	8.75	7	8.00
	9:27		Middle	3.0	21.60	21.60		8.43	8.43		32.96	32.96		84.2	84.0		6.12	6.11		8.69	8.76		9	
16/12/2015	10:32	Fine	Middle	2.5	19.50	19.50	19.45	8.44	8.44	8.45	32.75	32.75	32.82	81.7	80.7	80.9	6.18	6.10	6.12	7.73	7.48	7.59	4	4.50
	10:34		Middle	2.5	19.40	19.40		8.45	8.45		32.89	32.89		80.5	80.6		6.09	6.10		7.61	7.54		5	
18/12/2015	10:36	Fine	Middle	2.5	18.70	18.70	18.70	8.41	8.41	8.42	32.89	32.89	32.89	79.1	76.8	76.4	6.07	5.89	5.84	6.82	6.87	6.83	6	6.50
	10:38		Middle	2.5	18.70	18.70		8.42	8.42		32.89	32.89		75.8	73.8		5.74	5.67		6.82	6.82		7	
21/12/2015	16:40	Fine	Middle	3.0	20.00	20.00	20.00	8.40	8.40	8.41	32.92	32.92	32.92	85.9	84.9	85.4	6.43	6.36	6.40	4.89	4.92	4.96	3	2.50
	16:42		Middle	3.0	20.00	20.00		8.41	8.41		32.92	32.92		85.2	85.5		6.38	6.41		4.99	5.02		2	
23/12/2015	16:47	Cloudy	Middle	2.5	20.70	20.70	20.75	8.35	8.35	8.36	32.71	32.71	32.72	82.5	81.2	81.2	6.10	6.00	6.02	7.24	7.17	7.20	5	5.50
	16:49		Middle	2.5	20.80	20.80		8.37	8.37		32.73	32.73		80.9	80.3		6.05	5.94		7.31	7.09		6	
26/12/2015	5:57	Cloudy	Middle	2.5	18.90	18.90	18.90	8.44	8.44	8.44	32.09	32.09	32.09	74.9	76.3	76.6	5.74	5.85	5.88	3.59	3.51	3.56	5	4.50
	5:58		Middle	2.5	18.90	18.90		8.43	8.43		32.09	32.09		77.6	77.7		5.95	5.96		3.54	3.60		4	

Remarks:  
Single underline denotes exceedance over Action Level.  
Double underline denotes exceedance over Limit Level.



**Water Monitoring Result at P5 - WCT / RT / IT  
Mid-Flood Tide**

Date	Time	Weather Condition	Sampling Depth		Water Temperature		pH			Salinity		DO Saturation		DO		Turbidity		Suspended Solids						
			m		°C		-		ppt		%		mg/L		NTU		mg/L							
					Value	Average	Value	Average	Value	Average	Value	Average	Value	Average	Value	Average	Value	Average						
30/11/2015	11:15	Fine	Middle	3.0	23.90	23.90	23.90	8.37	8.37	8.38	32.29	32.29	32.29	82.6	83.0	83.2	5.79	5.89	5.85	5.58	5.57	5.57	4	4.50
	11:17		Middle	3.0	23.90	23.90		8.38	8.38		32.29	32.29		83.8	83.3		5.88	5.84		5.52	5.59		5	
2/12/2015	15:27	Fine	Middle	2.5	24.10	24.10	24.10	8.37	8.37	8.38	32.16	32.16	32.22	73.6	72.3	71.9	5.14	5.05	5.02	5.29	5.24	5.24	4	3.50
	15:29		Middle	2.5	24.10	24.10		8.38	8.38		32.28	32.28		71.7	70.0		5.01	4.88		5.22	5.21		3	
4/12/2015	14:16	Fine	Middle	2.5	22.70	22.70	22.75	8.40	8.40	8.41	31.67	31.67	32.17	77.2	78.5	77.5	5.51	5.60	5.53	6.90	6.78	6.74	6	5.00
	14:18		Middle	2.5	22.80	22.80		8.42	8.42		32.67	32.67		77.9	76.2		5.56	5.43		6.73	6.56		4	
7/12/2015	14:52	Fine	Middle	2.5	22.00	22.00	22.00	8.47	8.47	8.48	33.07	33.07	33.07	75.2	73.4	73.3	5.38	5.29	5.28	4.78	4.80	4.82	5	5.00
	14:54		Middle	2.5	22.00	22.00		8.48	8.48		33.07	33.07		72.6	71.9		5.24	5.19		4.83	4.85		5	
9/12/2015	16:03	Rainy	Middle	2.5	21.60	21.60	21.60	8.46	8.46	8.46	32.50	32.50	32.51	76.5	74.2	73.9	5.37	5.40	5.32	7.31	7.45	7.63	7	7.00
	16:05		Middle	2.5	21.60	21.60		8.46	8.46		32.52	32.52		72.6	72.4		5.29	5.20		7.85	7.89		7	
11/12/2015	16:43	Fine	Middle	2.5	22.00	22.00	22.00	8.42	8.42	8.42	32.82	32.82	32.82	74.0	72.3	71.4	5.32	5.22	5.15	5.03	4.96	4.94	<2	<2
	16:45		Middle	2.5	22.00	22.00		8.42	8.42		32.82	32.82		70.1	69.0		5.06	4.99		4.92	4.86			
14/12/2015	9:33	Cloudy	Middle	3.0	21.70	21.70	24.45	8.43	8.43	8.44	32.98	32.98	32.99	82.1	81.8	81.6	5.96	5.94	5.93	8.49	8.52	8.53	9	8.50
	9:35		Middle	3.0	21.70	32.70		8.44	8.44		32.99	32.99		82.1	80.4		5.96	5.84		8.54	8.55		8	
16/12/2015	10:36	Fine	Middle	2.5	19.90	19.90	19.90	8.45	8.45	8.45	32.88	32.88	32.90	79.8	79.1	78.3	5.98	5.93	5.87	8.11	8.22	8.24	14	14.50
	10:38		Middle	2.5	19.90	19.90		8.45	8.45		32.92	32.92		77.6	76.8		5.82	5.76		8.31	8.30		15	
18/12/2015	10:40	Fine	Middle	2.5	19.00	19.00	18.95	8.42	8.42	8.42	32.84	32.84	32.84	75.3	74.2	73.8	5.75	5.59	5.62	6.47	6.30	6.33	6	6.50
	10:42		Middle	2.5	18.90	18.90		8.42	8.42		32.84	32.84		73.0	72.8		5.57	5.56		6.29	6.27		7	
21/12/2015	16:44	Fine	Middle	3.0	20.00	20.00	20.00	8.42	8.42	8.42	32.92	32.92	32.92	87.8	87.3	87.2	6.57	6.53	6.53	5.62	5.76	5.72	3	3.50
	16:46		Middle	3.0	20.00	20.00		8.42	8.42		32.92	32.92		87.0	86.7		6.51	6.49		5.75	5.75		4	
23/12/2015	16:51	Cloudy	Middle	2.5	20.70	20.70	20.95	8.35	8.38	8.37	32.63	32.63	32.69	82.4	80.6	80.6	6.10	5.97	5.97	7.49	7.43	7.44	9	9.00
	16:53		Middle	2.5	21.70	20.70		8.38	8.38		32.74	32.74		79.5	79.8		5.88	5.91		7.43	7.41		9	
26/12/2015	6:02	Cloudy	Middle	2.5	19.00	19.00	19.00	8.44	8.44	8.44	31.73	31.72	31.73	72.1	72.3	72.1	5.55	5.56	5.55	3.56	3.59	3.53	3	3.00
	6:03		Middle	2.5	19.00	19.00		8.43	8.43		31.74	31.74		72.0	72.1		5.54	5.54		3.50	3.48		3	

Remarks:  
Single underline denotes exceedance over Action Level.  
Double underline denotes exceedance over Limit Level.



**Water Monitoring Result at RW21-P789 - Sun Hung Kai Centre  
Mid-Flood Tide**

Date	Time	Weather Condition	Sampling Depth		Water Temperature		pH			Salinity		DO Saturation		DO		Turbidity		Suspended Solids						
			m		°C		-		ppt		%		mg/L		NTU		mg/L							
					Value	Average	Value	Average	Value	Average	Value	Average	Value	Average	Value	Average	Value	Average						
30/11/2015	11:40	Fine	Middle	3.5	24.10	24.10	24.10	8.38	8.38	8.39	32.43	32.43	32.43	82.4	83.6	82.8	5.78	5.84	5.81	11.02	11.30	11.13	7	8.00
	11:42		Middle	3.5	24.10	24.10		8.39	8.39		32.43	32.43		82.0	83.0		5.79	5.81		11.17	11.04		9	
2/12/2015	15:50	Fine	Middle	3.5	24.20	24.20	24.25	8.32	8.32	8.34	32.45	32.45	32.45	84.2	81.0	80.6	5.86	5.64	5.61	3.33	3.34	3.33	6	6.50
	15:52		Middle	3.5	24.30	24.30		8.35	8.35		32.44	32.44		79.2	78.0		5.51	5.43		3.33	3.33		7	
4/12/2015	14:37	Fine	Middle	3.5	22.90	22.90	22.90	8.37	8.37	8.39	32.69	32.69	32.70	80.0	78.6	78.2	5.68	5.59	5.56	6.88	6.47	6.63	5	5.50
	14:39		Middle	3.5	22.90	22.90		8.41	8.41		32.70	32.70		77.4	76.6		5.51	5.45		6.65	6.53		6	
7/12/2015	15:13	Fine	Middle	3.5	22.20	22.20	22.20	8.42	8.42	8.44	33.08	33.08	33.10	77.3	76.2	75.6	5.56	5.48	5.44	5.76	5.66	5.72	5	4.50
	15:15		Middle	3.5	22.20	22.20		8.45	8.45		33.11	33.11		74.8	74.0		5.38	5.32		5.64	5.82		4	
9/12/2015	16:31	Rainy	Middle	3.5	21.30	21.30	21.25	8.40	8.40	8.41	32.44	32.44	32.46	73.8	73.3	73.6	5.42	5.38	5.40	6.45	6.43	6.41	4	4.00
	16:33		Middle	3.5	21.20	21.20		8.42	8.42		32.47	32.47		73.3	73.8		5.38	5.42		6.39	6.37		4	
11/12/2015	17:30	Fine	Middle	3.5	22.00	22.00	21.95	8.37	8.37	8.39	32.93	32.93	32.93	80.8	79.0	79.0	5.84	5.71	5.70	5.59	5.49	5.46	2	2.50
	17:32		Middle	3.5	21.90	21.90		8.41	8.41		32.93	32.93		78.4	77.7		5.63	5.62		5.42	5.34		3	
14/12/2015	9:55	Cloudy	Middle	3.5	21.80	21.80	21.80	8.38	8.38	8.39	32.95	32.95	32.96	90.1	89.8	89.5	6.53	6.50	6.48	5.91	5.90	5.90	8	7.50
	9:57		Middle	3.5	21.80	21.80		8.40	8.40		32.96	32.96		89.4	88.5		6.49	6.41		5.89	5.89		7	
16/12/2015	11:01	Fine	Middle	3.5	20.10	20.10	20.05	8.41	8.41	8.43	32.76	32.76	32.79	78.6	77.7	77.6	5.88	5.82	5.81	7.00	7.00	6.92	9	9.00
	11:03		Middle	3.5	20.00	20.00		8.44	8.44		32.82	32.82		77.3	76.8		5.79	5.75		6.84	6.85		9	
18/12/2015	11:00	Fine	Middle	3.5	19.40	19.40	19.40	8.36	8.36	8.38	32.73	32.73	32.82	82.5	82.0	81.5	6.25	6.21	6.18	5.75	5.49	5.66	4	4.50
	11:02		Middle	3.5	19.40	19.40		8.39	8.39		32.90	32.90		81.0	80.6		6.14	6.11		5.74	5.66		5	
21/12/2015	14:00	Fine	Middle	3.5	21.10	21.10	21.15	8.35	8.35	8.36	32.89	32.89	32.89	95.3	95.1	95.0	6.99	6.98	6.97	5.61	5.71	5.70	4	3.50
	14:02		Middle	3.5	21.20	21.20		8.37	8.37		32.89	32.89		95.3	94.4		6.99	6.92		5.74	5.75		3	
23/12/2015	14:50	Cloudy	Middle	3.5	21.10	21.10	21.20	8.24	8.24	8.28	32.68	32.68	32.68	94.1	96.5	94.9	7.27	7.07	7.04	4.30	4.15	4.19	5	4.50
	14:52		Middle	3.5	21.30	21.30		8.32	8.32		32.67	32.67		94.9	94.1		6.92	6.89		4.15	4.14		4	
26/12/2015	6:21	Cloudy	Middle	3.5	19.30	19.30	19.30	8.43	8.43	8.43	32.25	32.25	32.26	74.6	74.2	74.3	5.68	5.66	5.66	4.25	4.14	4.13	4	4.50
	6:22		Middle	3.5	19.30	19.30		8.43	8.43		32.27	32.27		74.3	74.1		5.66	5.65		4.10	4.04		5	

Remarks:  
Single underline denotes exceedance over Action Level.  
Double underline denotes exceedance over Limit Level.



**Water Monitoring Result at WSD19 - Sheung Wan  
Mid-Flood Tide**

Date	Time	Weather Condition	Sampling Depth		Water Temperature		pH			Salinity			DO Saturation		DO		Turbidity		Suspended Solids					
			m		°C		-		ppt		%		mg/L		NTU		mg/L							
					Value	Average	Value	Average	Value	Average	Value	Average	Value	Average	Value	Average	Value	Average						
30/11/2015	9:58	Fine	Middle	3.5	23.70	23.70	23.65	8.27	8.27	8.30	32.15	32.15	32.16	85.4	85.4	84.1	6.01	6.01	5.92	8.57	8.56	<u>8.56</u>	6	6.00
	10:00		Middle	3.5	23.60	23.60		8.32	8.32		32.16	32.16		82.9	82.5		5.84	5.82		8.56	8.56		6	
2/12/2015	14:31	Fine	Middle	3.5	24.70	24.70	24.90	8.22	8.22	8.27	32.40	32.40	32.37	72.0	70.0	72.6	4.95	4.81	4.99	9.80	9.90	<u>9.90</u>	10	9.50
	14:33		Middle	3.5	25.10	25.10		8.32	8.32		32.33	32.33		74.0	74.3		5.09	5.11		9.94	9.94		9	
4/12/2015	13:13	Fine	Middle	3.5	23.30	23.30	23.30	8.34	8.34	8.34	32.50	32.50	32.49	70.1	69.9	69.6	4.96	4.96	4.92	5.83	5.83	5.84	2	2.00
	13:15		Middle	3.5	23.30	23.30		8.34	8.34		32.48	32.48		69.5	68.8		4.91	4.86		5.84	5.84		2	
7/12/2015	13:56	Fine	Middle	3.5	22.20	22.20	22.15	8.34	8.34	8.37	33.00	33.00	33.01	86.9	85.0	83.5	6.26	6.12	6.01	8.72	8.62	<u>8.61</u>	10	9.50
	13:58		Middle	3.5	22.10	22.10		8.40	8.40		33.01	33.01		81.6	80.5		5.88	5.79		8.55	8.55		9	
9/12/2015	15:02	Rainy	Middle	3.5	21.00	21.60	21.45	8.32	8.32	8.34	32.73	32.73	32.77	68.4	67.1	67.4	4.98	4.89	4.86	6.71	6.70	6.69	5	5.50
	15:04		Middle	3.5	21.60	21.60		8.36	8.36		32.80	32.80		66.2	68.0		4.82	4.73		6.69	6.65		6	
11/12/2015	15:37	Fine	Middle	3.5	22.60	22.60	22.65	8.30	8.30	8.32	32.92	32.92	32.91	78.4	77.8	77.3	5.60	5.55	5.52	5.75	5.67	5.78	2	2.50
	15:39		Middle	3.5	22.70	22.70		8.34	8.34		32.90	32.90		76.6	76.3		5.47	5.45		5.96	5.75		3	
14/12/2015	8:10	Cloudy	Middle	3.5	21.70	21.70	21.70	8.34	8.34	8.35	32.97	32.97	32.97	84.0	85.1	84.6	6.09	6.17	6.14	8.01	8.00	8.00	7	7.50
	8:12		Middle	3.5	21.70	21.70		8.36	8.36		32.97	32.97		85.0	84.2		6.17	6.11		8.00	8.00		8	
16/12/2015	9:42	Fine	Middle	3.0	19.90	19.90	19.80	8.37	83.70	27.22	32.83	32.85	32.93	68.1	67.5	67.4	5.12	5.07	5.07	8.91	8.90	<u>8.88</u>	7	6.50
	9:44		Middle	3.0	19.70	19.70		8.40	8.40		33.01	33.01		67.1	66.9		5.04	5.03		8.90	8.80		6	
18/12/2015	9:46	Fine	Middle	3.5	18.50	18.50	18.35	8.15	8.15	8.20	32.69	32.69	32.79	73.4	72.5	72.2	5.66	5.59	5.57	8.49	8.53	<u>8.58</u>	8	8.00
	9:48		Middle	3.5	18.20	18.20		8.24	8.24		32.88	32.88		71.7	71.0		5.53	5.48		8.62	8.66		8	
21/12/2015	15:30	Fine	Middle	3.5	20.50	20.50	20.60	8.30	8.30	8.33	32.95	32.95	32.95	92.4	91.8	92.2	6.83	6.79	6.81	6.69	6.55	6.55	4	4.00
	15:32		Middle	3.5	20.70	20.70		8.35	8.35		32.94	32.94		91.8	92.6		6.79	6.84		6.50	6.46		4	
23/12/2015	15:52	Cloudy	Middle	3.5	20.80	20.80	20.85	8.15	8.15	8.21	32.82	32.79	32.79	91.3	87.7	86.8	6.72	6.46	6.39	8.25	8.26	<u>8.24</u>	6	6.00
	15:54		Middle	3.5	20.90	20.90		8.26	8.26		32.77	32.77		84.9	83.1		6.25	6.12		8.26	8.19		6	
26/12/2015	5:03	Cloudy	Middle	2.5	19.00	19.00	19.05	8.42	8.42	8.42	32.43	32.43	32.43	83.7	83.9	84.3	6.40	6.42	6.44	8.01	8.03	7.98	5	4.50
	5:04		Middle	2.5	19.10	19.10		8.42	8.42		32.42	32.42		84.7	84.8		6.47	6.48		7.90	7.98		4	

Remarks:  
Single underline denotes exceedance over Action Level.  
Double underline denotes exceedance over Limit Level.





**Water Monitoring Result at C7 - Windsor House  
Mid-Ebb Tide**

Date	Time	Weather Condition	Sampling Depth		Water Temperature			pH			Salinity		DO Saturation		DO		Turbidity		Suspended Solids					
					°C			-			ppt		%		mg/L		NTU		mg/L					
			m	Value	Average	Value	Average	Value	Average	Value	Average	Value	Average	Value	Average	Value	Average	Value	Average	Value	Average			
30/11/2015	2:02	Fine	Middle	-	22.90	22.90	22.85	8.37	8.37	8.38	32.62	32.62	32.62	77.4	77.2	78.1	5.52	5.51	5.57	3.46	3.17	3.19	2	2.00
	2:03		Middle	-	22.80	22.80		8.38	8.38		32.62	32.62		78.7	78.9		5.61	5.63		3.03	3.08		2	
2/12/2015	4:13	Cloudy	Middle	-	23.50	23.50	23.50	8.37	8.37	8.37	32.46	32.46	32.47	75.5	77.7	76.8	5.32	5.48	5.41	3.96	3.94	3.94	3	3.00
	4:14		Middle	-	23.50	23.50		8.36	8.36		32.48	32.48		77.1	76.8		5.44	5.41		3.86	3.99		3	
4/12/2015	3:00	Cloudy	Middle	-	21.60	21.60	21.50	8.38	8.38	8.40	32.67	32.67	32.68	81.5	82.2	81.9	5.98	6.00	5.99	3.86	3.88	3.91	3	3.50
	3:01		Middle	-	21.40	21.40		8.41	8.41		32.69	32.69		82.3	81.6		6.01	5.96		3.97	3.93		4	
7/12/2015	10:40	Fine	Middle	-	22.50	22.50	22.40	8.42	8.42	8.43	32.97	32.97	32.98	88.6	89.9	88.5	6.36	6.44	6.35	6.08	6.12	6.12	4	4.00
	10:42		Middle	-	22.30	22.30		8.43	8.43		32.99	32.99		88.0	87.5		6.31	6.27		6.13	6.14		4	
9/12/2015	2:20	Cloudy	Middle	-	20.80	20.80	20.70	8.44	8.44	8.45	33.13	33.13	33.14	74.0	75.9	75.5	5.53	5.61	5.59	4.02	3.81	3.81	2	2.50
	2:21		Middle	-	20.60	20.60		8.46	8.46		33.15	33.15		75.7	76.2		5.59	5.63		3.72	3.69		3	
12/12/2015	1:55	Cloudy	Middle	-	21.00	21.00	21.00	8.40	8.40	8.40	32.84	32.84	32.85	79.6	80.0	80.3	5.86	5.89	5.91	3.44	3.01	3.08	<2	<2
	1:56		Middle	-	21.00	21.00		8.40	8.40		32.85	32.85		80.2	81.2		5.90	5.98		2.91	2.94		<2	
14/12/2015	2:30	Cloudy	Middle	-	21.30	21.30	21.25	8.31	8.31	8.32	32.89	32.89	32.89	73.0	74.8	74.7	5.34	5.48	5.47	3.17	3.23	3.24	3	4.00
	2:31		Middle	-	21.20	21.20		8.32	8.32		32.89	32.89		76.1	74.7		5.57	5.47		3.28	3.26		5	
16/12/2015	2:24	Fine	Middle	-	18.50	18.50	18.45	8.42	8.42	8.43	33.01	33.01	33.01	79.7	79.9	79.8	6.14	6.16	6.16	7.03	7.05	6.76	4	3.00
	2:25		Middle	-	18.40	18.40		8.43	8.43		33.01	33.01		80.0	79.7		6.17	6.15		6.47	6.49		2	
18/12/2015	4:05	Fine	Middle	-	16.10	16.10	16.05	8.47	8.47	8.48	33.00	33.00	33.00	79.9	80.3	80.3	6.47	6.49	6.50	5.61	5.67	5.67	6	5.50
	4:06		Middle	-	16.00	16.00		8.48	8.48		33.00	33.00		80.6	80.3		6.52	6.50		5.68	5.71		5	
21/12/2015	10:30	Cloudy	Middle	-	20.80	20.80	20.80	8.37	8.37	8.38	32.68	32.68	32.68	86.0	86.6	86.8	6.35	6.40	6.41	8.34	8.30	8.30	4	3.50
	10:32		Middle	-	20.80	20.80		8.38	8.38		32.68	32.68		87.3	87.3		6.45	6.45		8.29	8.26		3	
23/12/2015	11:02	Fine	Middle	-	21.20	21.20	21.20	8.30	8.30	8.32	32.62	32.62	32.63	78.7	79.3	79.2	5.78	5.82	5.81	5.64	5.86	5.90	7	6.50
	11:04		Middle	-	21.20	21.20		8.33	8.33		32.63	32.63		79.3	79.5		5.82	5.83		6.00	6.09		6	
26/12/2015	1:30	Cloudy	Middle	-	19.40	19.40	19.40	8.31	8.31	8.32	32.48	32.48	32.49	78.4	78.5	78.6	5.96	5.96	5.97	3.07	3.03	3.01	4	3.50
	1:31		Middle	-	19.40	19.40		8.32	8.32		32.49	32.49		78.8	78.8		5.98	5.99		2.97	2.95		3	

Remarks:  
Single underline denotes exceedance over Action Level.  
Double underline denotes exceedance over Limit Level.



**Water Monitoring Result at C1 - HKCEC  
Mid-Ebb Tide**

Date	Time	Weather Condition	Sampling Depth		Water Temperature			pH			Salinity		DO Saturation		DO		Turbidity		Suspended Solids					
					°C		-		ppt		%		mg/L		NTU		mg/L							
			m	Value	Average	Value	Average	Value	Average	Value	Average	Value	Average	Value	Average	Value	Average	Value	Average					
30/11/2015	4:56	Fine	Middle	2.0	22.80	22.80	22.80	8.41	8.41	8.41	31.94	31.94	31.94	77.0	76.1	76.2	5.52	5.45	5.46	4.94	4.89	4.99	4	4.00
	4:57		Middle	2.0	22.80	22.80		8.41	8.41		31.94	31.94		75.5	76.1		5.41	5.46		5.07	5.05		4	
2/12/2015	5:09	Cloudy	Middle	2.5	23.20	23.20	23.20	8.28	8.28	8.29	31.58	31.58	31.58	73.1	73.7	73.2	5.20	5.26	5.21	4.98	4.82	4.90	4	4.00
	5:10		Middle	2.5	23.20	23.20		8.30	8.30		31.58	31.58		73.4	72.6		5.22	5.17		4.84	4.96		4	
4/12/2015	5:01	Cloudy	Middle	2.5	21.60	21.60	21.55	8.32	8.32	8.33	31.57	31.57	31.58	73.5	74.3	73.7	5.40	5.46	5.42	3.58	3.52	3.54	3	3.00
	5:02		Middle	2.5	21.50	21.50		8.33	8.33		31.59	31.59		73.8	73.2		5.42	5.38		3.50	3.55		3	
7/12/2015	9:57	Fine	Middle	2.5	21.70	21.70	21.70	8.48	8.48	8.49	33.16	33.16	33.16	76.1	75.1	74.9	5.52	5.45	5.44	6.69	6.77	6.74	4	5.00
	9:59		Middle	2.5	21.70	21.70		8.49	8.49		33.16	33.16		74.3	74.1		5.39	5.38		6.77	6.74		6	
9/12/2015	2:55	Cloudy	Middle	2.0	20.90	20.90	20.85	8.39	8.39	8.40	32.57	32.57	32.57	75.9	76.6	76.6	5.62	5.67	5.67	3.30	3.32	3.28	2	2.50
	2:56		Middle	2.0	20.80	20.80		8.41	8.41		32.56	32.56		76.9	76.8		5.70	5.69		3.26	3.23		3	
12/12/2015	3:48	Cloudy	Middle	2.0	21.20	21.20	21.20	8.41	8.41	8.42	32.90	32.90	32.91	76.4	77.0	76.9	5.61	5.64	5.64	4.72	4.77	4.78	2	2.00
	3:49		Middle	2.0	21.20	21.20		8.42	8.42		32.91	32.91		77.3	76.8		5.67	5.63		4.81	4.83		2	
14/12/2015	4:51	Cloudy	Middle	2.0	21.50	21.50	21.50	8.43	8.43	8.44	32.94	32.94	32.95	77.5	77.9	77.8	5.65	5.68	5.67	6.57	6.49	6.47	4	4.00
	4:52		Middle	2.0	21.50	21.50		8.44	8.44		32.95	32.95		77.9	77.8		5.68	5.67		6.46	6.37		4	
16/12/2015	3:57	Fine	Middle	2.0	19.00	19.00	18.95	8.24	8.24	8.26	32.85	32.85	32.86	78.4	78.6	78.6	6.00	6.02	6.02	6.55	6.63	6.66	4	4.50
	3:58		Middle	2.0	18.90	18.90		8.28	8.28		32.86	32.86		79.0	78.3		6.05	5.99		6.66	6.79		5	
18/12/2015	5:47	Fine	Middle	2.5	15.20	15.20	15.15	8.26	8.26	8.30	32.31	32.31	32.33	74.0	74.7	74.6	5.99	6.06	6.04	5.80	5.91	5.91	5	5.50
	5:48		Middle	2.5	15.10	15.10		8.34	8.34		32.34	32.34		74.9	74.8		6.06	6.05		5.95	5.97		6	
21/12/2015	9:20	Cloudy	Middle	2.5	19.90	19.90	19.90	8.43	8.43	8.43	32.98	32.98	32.98	86.3	87.5	87.0	6.47	6.53	6.50	7.01	7.00	7.00	5	5.00
	9:22		Middle	2.5	19.90	19.90		8.43	8.43		32.98	32.98		87.2	86.9		6.51	6.49		6.98	6.99		5	
23/12/2015	10:18	Fine	Middle	2.5	20.40	20.40	20.45	8.41	8.41	8.42	32.79	32.79	32.81	82.2	81.3	81.1	6.11	6.05	6.03	5.92	5.65	5.76	6	5.50
	10:20		Middle	2.5	20.50	20.50		8.42	8.42		32.82	32.82		80.7	80.1		6.00	5.95		5.70	5.75		5	
26/12/2015	3:38	Cloudy	Middle	2.0	19.40	19.40	19.40	8.09	8.09	8.11	31.85	31.85	31.86	73.3	73.5	73.4	5.58	5.60	5.59	11.40	11.38	<u>11.37</u>	4	4.50
	3:39		Middle	2.0	19.40	19.40		8.13	8.13		31.86	31.86		73.6	73.3		5.61	5.58		11.35	11.33		5	

Remarks:  
Single underline denotes exceedance over Action Level.  
Double underline denotes exceedance over Limit Level.



**Water Monitoring Result at P1 - HKCEC Phase I  
Mid-Ebb Tide**

Date	Time	Weather Condition	Sampling Depth		Water Temperature			pH			Salinity		DO Saturation		DO		Turbidity		Suspended Solids					
					°C			-			ppt		%		mg/L		NTU		mg/L					
			m	Value	Average	Value	Average	Value	Average	Value	Average	Value	Average	Value	Average	Value	Average	Value	Average					
30/11/2015	4:25	Fine	Middle	2.0	23.00	23.00	22.98	8.39	8.39	8.38	31.79	31.79	31.79	75.5	75.8	75.6	5.40	5.42	5.40	4.88	4.91	4.94	4	5.00
	4:26		Middle	2.0	22.90	23.00		8.36	8.36		31.78	31.78		75.6	75.3		5.41	5.38		4.97	4.99		6	
2/12/2015	4:45	Cloudy	Middle	2.5	23.20	23.20	23.20	8.38	8.38	8.39	32.39	32.39	32.40	76.4	76.8	76.2	5.41	5.44	5.40	5.79	5.81	5.78	4	3.50
	4:46		Middle	2.5	23.20	23.20		8.39	8.39		32.40	32.40		76.1	75.6		5.39	5.36		5.77	5.73		3	
4/12/2015	4:25	Cloudy	Middle	2.5	21.20	21.20	21.20	8.50	8.50	8.50	32.82	32.82	32.82	74.2	74.4	75.1	5.44	5.46	5.51	4.35	4.50	4.49	4	3.50
	4:26		Middle	2.5	21.20	21.20		8.50	8.50		32.82	32.82		75.4	76.5		5.53	5.62		4.39	4.71		3	
7/12/2015	9:41	Fine	Middle	2.5	21.10	21.20	21.13	8.41	8.41	8.43	32.94	32.94	32.95	76.4	74.9	74.5	5.60	5.49	5.46	6.42	6.36	6.38	4	4.50
	9:43		Middle	2.5	21.10	21.10		8.45	8.45		32.95	32.95		73.2	73.5		5.36	5.39		6.33	6.40		5	
9/12/2015	2:43	Cloudy	Middle	2.0	20.50	20.50	20.45	8.47	8.47	8.48	33.06	33.06	33.07	74.9	75.9	75.4	5.57	5.64	5.63	3.48	3.54	3.56	3	3.00
	2:44		Middle	2.0	20.40	20.40		8.48	8.48		33.07	33.07		75.5	75.1		5.61	5.68		3.59	3.63		3	
12/12/2015	3:35	Cloudy	Middle	2.0	21.10	21.10	21.05	8.14	8.14	8.18	32.77	32.77	32.77	75.5	76.3	75.8	5.56	5.61	5.58	6.77	6.80	6.80	<2	<2
	3:36		Middle	2.0	21.00	21.00		8.22	8.20		32.77	32.78		76.0	75.5		5.57	5.56		6.83	6.81		<2	
14/12/2015	4:30	Cloudy	Middle	2.0	21.30	21.30	21.30	8.18	8.18	8.23	32.32	32.32	32.35	71.9	72.7	72.5	5.28	5.34	5.33	4.50	4.43	4.51	4	4.00
	4:31		Middle	2.0	21.30	21.30		8.28	8.28		32.38	32.38		72.9	72.6		5.35	5.33		4.54	4.58		4	
16/12/2015	3:31	Fine	Middle	2.0	18.80	18.80	18.75	8.44	8.44	8.45	33.04	33.04	33.05	77.4	77.5	77.4	5.93	5.94	5.94	7.48	7.50	7.40	4	4.00
	3:32		Middle	2.0	18.70	18.70		8.46	8.45		33.05	33.05		77.5	77.3		5.94	5.93		7.32	7.30		4	
18/12/2015	5:23	Fine	Middle	2.5	15.90	15.90	15.85	8.45	8.45	8.47	33.11	33.11	33.11	75.7	76.7	77.0	6.15	6.21	6.24	6.51	6.75	6.66	5	5.50
	5:24		Middle	2.5	15.80	15.80		8.49	8.49		33.11	33.11		77.7	78.0		6.29	6.32		6.70	6.66		6	
21/12/2015	9:00	Cloudy	Middle	2.5	19.80	19.80	19.80	8.39	8.39	8.40	32.99	32.99	32.99	91.0	91.9	91.6	6.84	6.90	6.88	6.18	6.16	6.16	4	4.00
	9:02		Middle	2.5	19.80	19.80		8.41	8.41		32.99	32.99		91.3	92.2		6.86	6.93		6.15	6.14		4	
23/12/2015	10:02	Fine	Middle	2.5	20.70	20.70	20.80	8.33	8.33	8.35	32.89	32.89	32.85	77.7	77.1	76.7	5.74	5.70	5.71	7.39	7.42	7.39	7	6.00
	10:04		Middle	2.5	20.90	20.90		8.36	8.36		32.80	32.80		77.3	74.8		5.71	5.67		7.38	7.36		5	
26/12/2015	3:18	Cloudy	Middle	2.0	19.20	19.20	19.20	8.33	8.33	8.35	32.48	32.48	32.48	74.7	75.1	74.8	5.69	5.72	5.70	6.97	7.21	7.19	5	6.00
	3:19		Middle	2.0	19.20	19.20		8.36	8.36		32.49	32.48		74.6	74.6		5.70	5.68		7.31	7.25		7	

Remarks:  
Single underline denotes exceedance over Action Level.  
Double underline denotes exceedance over Limit Level.



**Water Monitoring Result at P3 - APA  
Mid-Ebb Tide**

Date	Time	Weather Condition	Sampling Depth		Water Temperature			pH			Salinity		DO Saturation		DO		Turbidity		Suspended Solids					
					°C			-			ppt		%		mg/L		NTU		mg/L					
			m	Value	Average	Value	Average	Value	Average	Value	Average	Value	Average	Value	Average	Value	Average	Value	Average	Value	Average			
30/11/2015	4:32	Fine	Middle	2.0	23.00	23.00	22.98	8.42	8.42	8.42	31.96	31.96	31.97	77.2	77.4	77.4	5.52	5.63	5.61	5.61	5.57	5.54	4	4.00
	4:33		Middle	2.0	22.90	23.00		8.42	8.42		31.97	31.97		77.4	77.7		5.63	5.66		5.50	5.48		4	
2/12/2015	4:52	Cloudy	Middle	2.5	23.20	23.20	23.20	8.42	8.42	8.42	32.41	32.41	32.42	72.4	73.9	73.1	5.13	5.24	5.18	4.69	4.65	4.59	3	3.00
	4:53		Middle	2.5	23.20	23.20		8.42	8.42		32.42	32.42		73.1	72.9		5.18	5.17		4.53	4.50		3	
4/12/2015	4:31	Cloudy	Middle	2.5	21.30	21.30	21.30	8.47	8.47	8.47	32.85	32.85	32.85	77.0	77.5	77.3	5.64	5.68	5.66	3.84	3.86	3.85	2	2.50
	4:32		Middle	2.5	21.30	21.30		8.47	8.47		32.85	32.85		77.1	77.6		5.64	5.68		3.90	3.81		3	
7/12/2015	9:45	Fine	Middle	2.5	21.10	21.10	21.10	8.46	8.46	8.47	33.09	33.09	33.09	78.0	76.1	75.7	5.69	5.58	5.55	6.11	6.03	5.75	4	5.00
	9:47		Middle	2.5	21.10	21.10		8.47	8.47		33.09	33.09		75.0	73.8		5.50	5.41		5.47	5.40		6	
9/12/2015	2:48	Cloudy	Middle	2.0	20.50	20.50	20.45	8.51	8.51	8.52	32.73	32.73	32.73	76.6	75.5	75.8	5.69	5.62	5.63	3.62	3.60	3.64	2	2.00
	2:49		Middle	2.0	20.40	20.40		8.52	8.52		32.73	32.73		75.2	75.7		5.59	5.63		3.65	3.69		2	
12/12/2015	3:38	Cloudy	Middle	2.0	21.10	21.00	21.08	8.45	8.45	8.45	33.05	33.05	33.05	73.3	73.6	73.5	5.38	5.40	5.39	4.89	4.66	4.61	2	2.00
	3:39		Middle	2.0	21.10	21.10		8.45	8.45		33.05	33.05		73.7	73.2		5.41	5.37		4.48	4.40		<2	
14/12/2015	4:35	Cloudy	Middle	2.0	21.40	21.40	21.40	8.39	8.39	8.40	32.92	32.92	32.93	76.2	76.0	75.9	5.60	5.56	5.56	5.86	5.92	5.93	4	5.00
	4:36		Middle	2.0	21.40	21.40		8.40	8.40		32.92	32.94		75.9	75.6		5.55	5.54		5.97	5.95		6	
16/12/2015	3:36	Fine	Middle	2.0	18.80	18.80	18.80	8.49	8.49	8.49	33.10	33.10	33.10	78.2	78.3	78.1	5.98	5.99	5.98	6.53	6.56	6.57	5	4.50
	3:37		Middle	2.0	18.80	18.80		8.49	8.49		33.10	33.10		78.0	77.8		5.97	5.96		6.59	6.61		4	
18/12/2015	5:28	Fine	Middle	2.5	16.30	16.30	16.20	8.51	8.51	8.52	33.09	33.09	33.10	76.9	76.9	77.1	6.18	6.19	6.20	5.10	5.12	5.34	5	5.50
	5:29		Middle	2.5	16.10	16.10		8.53	8.53		33.10	33.10		77.2	77.2		6.22	6.22		5.56	5.58		6	
21/12/2015	9:05	Cloudy	Middle	2.5	19.80	19.80	19.80	8.42	8.42	8.42	32.99	32.99	33.00	89.8	89.9	89.2	6.74	6.75	6.70	6.96	6.94	6.94	5	4.50
	9:07		Middle	2.5	19.80	19.80		8.42	8.42		33.00	33.00		89.1	87.9		6.69	6.60		6.93	6.93		4	
23/12/2015	10:06	Fine	Middle	2.5	20.50	20.50	20.55	8.38	8.38	8.39	32.83	32.83	32.83	81.5	80.0	79.1	6.05	5.93	5.87	5.54	5.58	5.52	4	5.00
	10:08		Middle	2.5	20.60	20.60		8.39	8.39		32.82	32.82		78.3	76.7		5.81	5.69		5.47	5.47		6	
26/12/2015	3:22	Cloudy	Middle	2.0	19.20	19.20	19.20	8.38	8.38	8.39	32.53	32.53	32.54	76.4	76.5	76.2	5.82	5.82	5.80	4.62	4.56	4.61	4	5.00
	3:23		Middle	2.0	19.20	19.20		8.40	8.40		32.54	32.54		76.0	75.7		5.79	5.76		4.66	4.59		6	

Remarks:  
Single underline denotes exceedance over Action Level.  
Double underline denotes exceedance over Limit Level.



**Water Monitoring Result at P4 - SOC  
Mid-Ebb Tide**

Date	Time	Weather Condition	Sampling Depth		Water Temperature			pH			Salinity		DO Saturation		DO		Turbidity		Suspended Solids					
					°C		-		ppt		%		mg/L		NTU		mg/L							
			m	Value	Average	Value	Average	Value	Average	Value	Average	Value	Average	Value	Average	Value	Average	Value	Average					
30/11/2015	4:41	Fine	Middle	2.0	22.80	22.80	22.80	8.43	8.43	8.43	31.97	31.97	31.98	78.9	79.6	79.5	5.65	5.70	5.70	4.86	4.90	4.94	3	3.50
	4:42		Middle	2.0	22.80	22.80		8.43	8.43		31.99	31.99		79.9	79.7		5.72	5.71		4.98	5.00		4	
2/12/2015	4:57	Cloudy	Middle	2.5	23.10	23.10	23.10	8.43	8.43	8.43	32.43	32.43	32.43	76.8	75.8	76.7	5.46	5.38	5.44	4.60	4.62	4.46	3	3.50
	4:58		Middle	2.5	23.10	23.10		8.43	8.43		32.43	32.43		77.0	77.1		5.46	5.47		4.32	4.30		4	
4/12/2015	4:42	Cloudy	Middle	2.5	21.20	21.20	21.20	8.44	8.44	8.44	32.74	32.74	32.74	74.1	74.6	74.4	5.43	5.48	5.46	4.01	4.10	4.05	4	3.50
	4:43		Middle	2.5	21.20	21.20		8.44	8.44		32.74	32.74		74.3	74.6		5.45	5.48		4.06	4.02		3	
7/12/2015	9:49	Fine	Middle	2.5	21.20	21.20	21.20	8.47	8.47	8.47	33.10	33.10	33.10	76.3	74.8	75.0	5.58	5.47	5.48	5.98	5.99	5.99	5	5.00
	9:51		Middle	2.5	21.20	21.20		8.47	8.47		33.10	33.10		74.5	74.3		5.45	5.43		6.00	6.00		5	
9/12/2015	2:51	Cloudy	Middle	2.0	20.40	20.40	20.35	8.53	8.53	8.53	32.60	32.60	32.60	77.0	76.9	77.2	5.74	5.73	5.76	4.03	4.07	4.05	3	3.00
	2:52		Middle	2.0	20.30	20.30		8.53	8.53		32.60	32.60		77.3	77.7		5.77	5.80		4.09	4.00		3	
12/12/2015	3:41	Cloudy	Middle	2.0	21.10	21.10	21.10	8.47	8.47	8.47	33.06	33.06	33.06	80.2	80.5	80.1	5.89	5.91	5.89	6.78	6.80	6.77	<2	<2
	3:42		Middle	2.0	21.10	21.10		8.47	8.47		33.06	33.06		80.1	79.5		5.89	5.85		6.76	6.73		<2	
14/12/2015	4:40	Cloudy	Middle	2.0	21.30	21.30	21.30	8.48	8.47	8.47	32.95	32.95	32.95	80.2	80.5	80.5	5.86	5.89	5.89	5.84	5.80	5.76	5	4.50
	4:41		Middle	2.0	21.30	21.30		8.47	8.47		32.95	32.95		80.4	80.9		5.88	5.92		5.71	5.69		4	
16/12/2015	3:44	Fine	Middle	2.0	18.80	18.80	18.80	8.50	8.50	8.51	33.12	33.12	33.12	82.4	82.3	82.0	6.31	6.30	6.28	5.69	5.74	5.65	4	4.50
	3:45		Middle	2.0	18.80	18.80		8.51	8.51		33.12	33.12		82.0	81.2		6.28	6.22		5.57	5.61		5	
18/12/2015	5:32	Fine	Middle	2.5	16.30	16.30	16.20	8.54	8.54	8.54	32.91	32.93	32.93	80.5	81.7	81.5	6.49	6.59	6.58	6.39	6.42	6.46	4	5.00
	5:33		Middle	2.5	16.10	16.10		8.54	8.54		32.93	32.93		81.6	82.1		6.59	6.63		6.50	6.54		6	
21/12/2015	9:10	Cloudy	Middle	2.5	19.90	19.90	19.88	8.42	8.42	8.42	32.98	32.98	32.99	87.0	87.5	87.0	6.52	6.56	6.52	8.02	8.01	8.00	6	6.00
	9:12		Middle	2.5	19.90	19.80		8.41	8.41		32.99	32.99		87.2	86.1		6.54	6.46		8.00	7.97		6	
23/12/2015	10:10	Fine	Middle	2.5	20.50	20.50	20.55	8.40	8.40	8.40	32.80	32.80	32.81	85.0	82.6	81.8	6.31	6.12	6.07	6.73	6.71	6.81	8	7.00
	10:12		Middle	2.5	20.60	20.60		8.40	8.40		32.81	32.81		80.1	79.5		5.94	5.90		6.89	6.90		6	
26/12/2015	3:27	Cloudy	Middle	2.0	19.10	19.10	19.10	8.41	8.41	8.41	32.53	32.53	32.53	77.7	78.3	78.4	5.93	5.98	5.98	5.46	5.40	5.42	6	5.00
	3:28		Middle	2.0	19.10	19.10		8.41	8.41		32.53	32.53		78.7	78.8		6.01	6.01		5.36	5.45		4	

Remarks:  
Single underline denotes exceedance over Action Level.  
Double underline denotes exceedance over Limit Level.



**Water Monitoring Result at P5 - WCT / RT / IT  
Mid-Ebb Tide**

Date	Time	Weather Condition	Sampling Depth		Water Temperature			pH			Salinity		DO Saturation		DO		Turbidity		Suspended Solids					
			m		°C		-		ppt		%		mg/L		NTU		mg/L							
					Value	Average	Value	Average	Value	Average	Value	Average	Value	Average	Value	Average	Value	Average						
30/11/2015	4:50	Fine	Middle	2.0	23.00	23.00	22.95	8.43	8.43	8.44	31.98	31.98	31.98	74.8	76.2	75.9	5.37	5.46	5.44	5.52	5.50	5.51	4	4.00
	4:51		Middle	2.0	22.90	22.90		8.44	8.44		31.98	31.98		76.2	76.4		5.46	5.46		5.54	5.46		4	
2/12/2015	5:06	Cloudy	Middle	2.5	23.00	23.00	23.00	8.44	8.44	8.44	32.38	32.38	32.41	72.9	74.7	73.8	5.26	5.31	5.28	5.17	5.15	5.16	4	4.00
	5:07		Middle	2.5	23.00	23.00		8.44	8.44		32.43	32.43		73.9	73.6		5.28	5.27		5.10	5.20		4	
4/12/2015	4:55	Cloudy	Middle	2.5	21.50	21.50	21.50	8.49	8.49	8.49	32.82	32.82	32.83	78.7	78.4	78.7	5.76	5.72	5.75	4.40	4.42	4.37	3	3.50
	4:56		Middle	2.5	21.50	21.50		8.49	8.49		32.83	32.83		78.7	78.8		5.75	5.76		4.36	4.31		4	
7/12/2015	9:53	Fine	Middle	2.5	21.60	21.60	21.55	8.47	8.47	8.48	33.16	33.16	33.17	78.0	77.1	77.0	5.65	5.60	5.59	19.99	18.90	19.86	20	<u>19.50</u>
	9:55		Middle	2.5	21.50	21.50		8.48	8.48		33.17	33.17		76.6	76.3		5.57	5.54		20.50	20.04		19	
9/12/2015	2:53	Cloudy	Middle	2.0	20.50	20.50	20.45	8.53	8.53	8.53	32.66	32.66	32.67	77.3	77.6	77.5	5.75	5.79	5.77	3.83	3.67	3.73	<2	<2
	2:54		Middle	2.0	20.40	20.40		8.53	8.53		32.67	32.67		77.5	77.4		5.77	5.76		3.70	3.72		<2	
12/12/2015	3:45	Cloudy	Middle	2.0	21.10	21.10	21.10	8.48	8.48	8.48	33.07	33.07	33.07	78.4	78.1	78.7	5.75	5.73	5.77	5.20	5.18	5.11	<2	<2
	3:46		Middle	2.0	21.10	21.10		8.48	8.48		33.07	33.07		79.0	79.2		5.80	5.81		5.00	5.06		<2	
14/12/2015	4:45	Cloudy	Middle	2.0	21.50	21.50	21.50	8.45	8.45	8.45	32.96	32.96	32.97	74.6	74.9	74.5	5.44	5.46	5.43	5.95	5.92	5.81	6	6.00
	4:46		Middle	2.0	21.50	21.50		8.45	8.45		32.97	32.97		74.3	74.0		5.42	5.39		5.69	5.66		6	
16/12/2015	3:49	Fine	Middle	2.0	18.80	18.80	18.80	8.51	8.51	8.51	33.11	33.11	33.11	78.5	78.9	78.8	6.01	6.04	6.04	4.66	4.64	4.68	4	3.50
	3:50		Middle	2.0	18.80	18.80		8.51	8.51		33.11	33.11		79.0	78.8		6.05	6.04		4.69	4.71		3	
18/12/2015	5:40	Fine	Middle	2.5	15.60	15.60	15.55	8.55	8.55	8.55	32.90	32.90	32.89	80.0	80.1	80.0	6.54	6.54	6.53	4.61	4.59	4.68	4	4.50
	5:41		Middle	2.5	15.50	15.50		8.55	8.55		32.88	32.88		79.8	79.9		6.52	6.53		4.70	4.80		5	
21/12/2015	9:15	Cloudy	Middle	2.5	19.90	19.90	19.90	8.43	8.43	8.43	32.98	32.98	32.98	91.5	91.1	90.9	6.85	6.83	6.82	6.40	6.45	6.44	5	4.50
	9:17		Middle	2.5	19.90	19.90		8.43	8.43		32.97	32.97		90.6	90.5		6.80	6.79		6.44	6.45		4	
23/12/2015	10:14	Fine	Middle	2.5	20.50	20.50	20.50	8.41	8.41	8.41	32.83	32.83	32.83	82.1	82.7	81.9	6.09	6.14	6.08	7.07	7.07	7.07	8	7.50
	10:16		Middle	2.5	20.50	20.50		8.41	8.41		32.83	32.83		81.9	80.7		6.08	5.99		7.07	7.07		7	
26/12/2015	3:33	Cloudy	Middle	2.0	19.20	19.20	19.20	8.42	8.42	8.42	32.54	32.54	32.54	76.9	77.1	77.0	5.86	5.87	5.87	4.75	4.69	4.74	7	6.00
	3:34		Middle	2.0	19.20	19.20		8.42	8.42		32.54	32.54		77.0	77.0		5.87	5.87		4.71	4.80		5	

Remarks:  
Single underline denotes exceedance over Action Level.  
Double underline denotes exceedance over Limit Level.



**Water Monitoring Result at RW21-P789 - Sun Hung Kai Centre  
Mid-Ebb Tide**

Date	Time	Weather Condition	Sampling Depth		Water Temperature			pH			Salinity			DO Saturation			DO			Turbidity			Suspended Solids	
			m		°C		-		ppt		%		mg/L		NTU		mg/L							
					Value	Average	Value	Average	Value	Average	Value	Average	Value	Average	Value	Average	Value	Average	Value	Average				
30/11/2015	3:19	Fine	Middle	3.5	22.90	22.90	22.85	8.26	8.26	8.27	32.33	32.33	32.36	79.0	79.2	79.2	5.65	5.67	5.67	4.71	4.87	4.88	3	3.50
	3:20		Middle	3.5	22.80	22.80		8.28	8.27		32.39	32.39		79.4	79.2		5.69	5.67		4.97	4.95		4	
2/12/2015	2:08	Cloudy	Middle	3.5	23.30	23.30	23.30	8.31	8.31	8.33	32.60	32.60	32.61	76.7	77.2	76.8	5.42	5.46	5.44	5.61	5.67	5.74	5	5.00
	2:09		Middle	3.5	23.30	23.30		8.34	8.34		32.61	32.61		77.0	76.4		5.45	5.41		5.82	5.85		5	
4/12/2015	3:30	Cloudy	Middle	3.5	21.40	21.40	21.30	8.24	8.24	8.26	32.62	32.62	32.65	76.7	76.9	76.4	5.52	5.54	5.55	2.66	2.72	2.75	2	2.00
	3:31		Middle	3.5	21.20	21.20		8.28	8.28		32.68	32.68		75.9	76.0		5.55	5.58		2.78	2.82		2	
7/12/2015	10:16	Fine	Middle	3.5	21.70	21.70	21.65	8.42	8.42	8.44	33.05	33.05	33.07	81.8	80.0	79.6	5.94	5.80	5.78	5.91	5.90	5.91	6	6.00
	10:18		Middle	3.5	21.60	21.60		8.46	8.46		33.09	33.09		78.7	77.8		5.72	5.65		5.92	5.91		6	
9/12/2015	2:00	Cloudy	Middle	3.0	20.50	20.50	20.40	8.36	8.36	8.40	32.74	32.74	32.74	76.1	76.4	76.5	5.66	5.69	5.69	5.03	5.10	4.93	4	3.00
	2:01		Middle	3.0	20.30	20.30		8.43	8.43		32.74	32.74		76.2	77.1		5.67	5.74		4.81	4.79		2	
12/12/2015	3:10	Cloudy	Middle	3.0	20.90	20.90	20.90	8.35	8.35	8.37	32.79	32.79	32.79	77.0	77.9	77.8	5.67	5.76	5.74	5.57	5.35	5.39	<2	≤2
	3:11		Middle	3.0	20.90	20.90		8.38	8.38		32.78	32.78		78.2	78.0		5.77	5.75		5.33	5.30		<2	
14/12/2015	3:50	Cloudy	Middle	2.5	21.30	21.30	21.30	8.36	8.36	8.36	31.78	31.78	31.79	70.3	70.4	70.7	5.20	5.20	5.22	3.85	3.87	3.80	3	2.50
	3:51		Middle	2.5	21.30	21.30		8.36	8.36		31.79	31.79		70.8	71.2		5.22	5.25		3.75	3.72		2	
16/12/2015	3:06	Fine	Middle	2.5	18.50	18.50	18.45	8.45	8.45	8.46	32.46	32.46	32.46	75.3	75.3	75.2	5.83	5.83	5.82	7.10	7.13	7.15	<2	≤2
	3:07		Middle	2.5	18.40	18.40		8.46	8.46		32.46	32.46		75.0	75.2		5.80	5.82		7.15	7.21		<2	
18/12/2015	4:45	Fine	Middle	3.5	16.20	16.20	16.20	8.38	8.38	8.39	33.09	33.09	33.10	77.0	76.9	76.7	6.20	6.20	6.18	8.55	8.90	8.78	4	4.00
	4:46		Middle	3.5	16.20	16.20		8.39	8.39		33.10	33.10		76.7	76.0		6.17	6.13		8.85	8.80		4	
21/12/2015	9:45	Cloudy	Middle	3.5	20.00	20.00	20.00	8.40	8.40	8.41	32.94	32.94	32.94	92.5	92.7	91.9	6.93	6.94	6.88	5.00	4.98	5.02	3	3.00
	9:47		Middle	3.5	20.00	20.00		8.42	8.42		32.94	32.94		91.3	91.1		6.84	6.82		5.04	5.05		3	
23/12/2015	10:38	Fine	Middle	3.5	20.60	20.60	20.65	8.35	8.35	8.37	32.83	32.83	32.82	88.4	86.4	85.9	6.54	6.40	6.36	6.29	6.29	6.29	4	4.50
	10:40		Middle	3.5	20.70	20.70		8.39	8.39		32.81	32.81		84.8	83.9		6.28	6.21		6.29	6.29		5	
26/12/2015	2:47	Cloudy	Middle	3.0	19.30	19.30	19.30	8.25	8.25	8.26	31.39	31.39	31.39	71.0	71.2	71.4	5.43	5.47	5.47	3.09	3.11	3.07	5	4.50
	2:48		Middle	3.0	19.30	19.30		8.26	8.26		31.39	31.39		71.8	71.7		5.49	5.49		3.05	3.01		4	

Remarks:  
Single underline denotes exceedance over Action Level.  
Double underline denotes exceedance over Limit Level.



**Water Monitoring Result at WSD19 - Sheung Wan  
Mid-Ebb Tide**

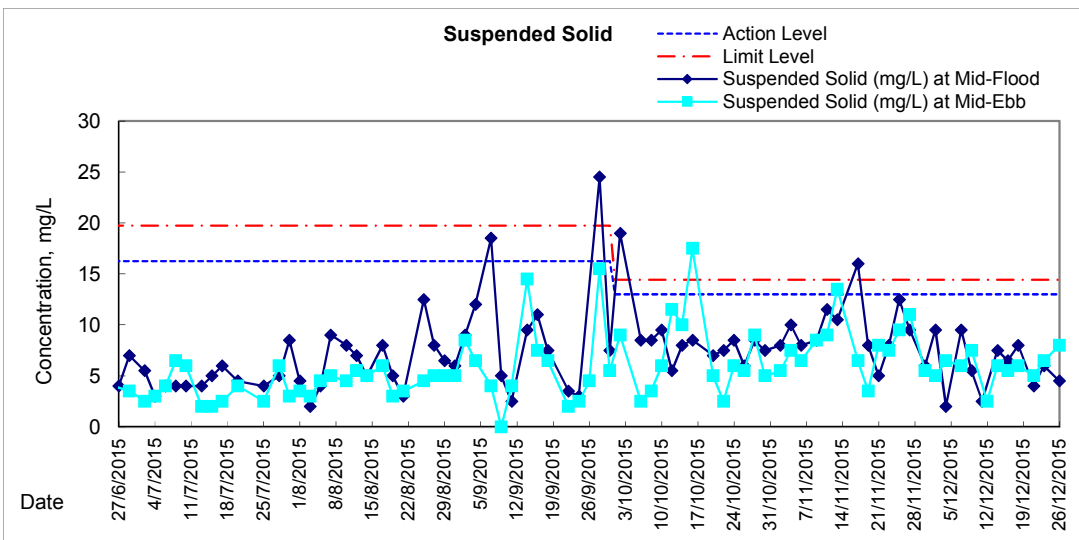
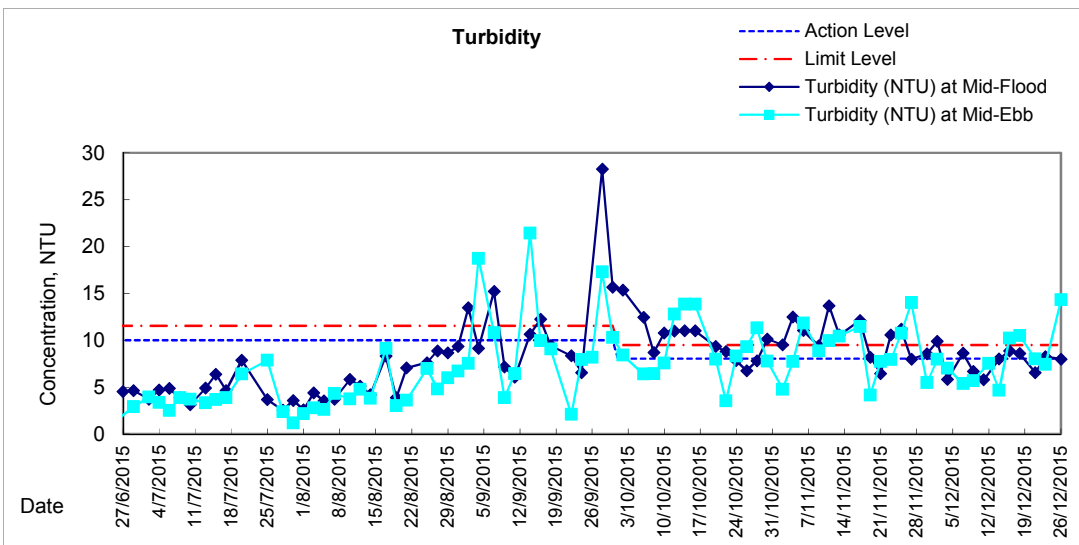
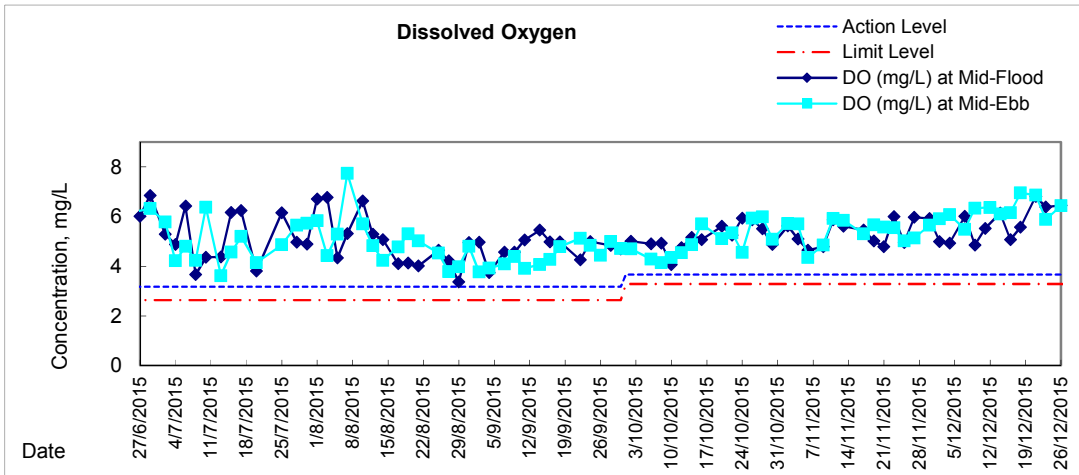
Date	Time	Weather Condition	Sampling Depth		Water Temperature			pH			Salinity			DO Saturation			DO			Turbidity			Suspended Solids	
			m		°C		-		ppt		%		mg/L		NTU		mg/L							
					Value	Average	Value	Average	Value	Average	Value	Average	Value	Average	Value	Average	Value	Average	Value	Average				
30/11/2015	5:25	Fine	Middle	2.5	22.50	22.50	22.45	8.40	8.40	8.40	31.65	31.65	31.65	77.9	78.8	78.2	5.63	5.69	5.65	5.51	5.53	5.48	6	5.50
	5:26		Middle	2.5	22.40	22.40		8.40	8.40		31.65	31.65		78.5	77.4		5.67	5.59		5.48	5.39		5	
2/12/2015	2:58	Cloudy	Middle	3.0	23.20	23.20	23.20	8.14	8.14	8.16	32.16	32.16	32.17	82.6	84.1	83.2	5.87	5.97	5.91	8.02	7.98	7.99	4	5.00
	2:59		Middle	3.0	23.20	23.20		8.17	8.17		32.18	32.18		83.6	82.6		5.93	5.87		8.00	7.95		6	
4/12/2015	5:40	Cloudy	Middle	2.5	21.20	21.20	21.20	8.47	8.47	8.47	32.74	32.74	32.74	82.0	82.8	82.8	6.02	6.08	6.08	7.05	7.07	7.04	6	6.50
	5:41		Middle	2.5	21.20	21.20		8.47	8.47		32.74	32.74		83.4	83.0		6.12	6.09		7.02	7.00		7	
7/12/2015	8:38	Fine	Middle	3.5	21.40	21.40	21.30	8.57	8.56	8.56	33.34	33.34	33.35	74.5	75.0	75.1	5.44	5.48	5.49	5.32	5.39	5.38	6	6.00
	8:40		Middle	3.5	21.20	21.20		8.55	8.55		33.35	33.35		75.6	75.1		5.53	5.49		5.47	5.33		6	
9/12/2015	22:45	Cloudy	Middle	3.0	20.00	20.00	19.98	8.10	8.10	8.12	33.08	33.08	33.10	84.7	84.7	84.3	6.36	6.35	6.33	5.70	5.78	5.70	7	7.50
	22:46		Middle	3.0	19.90	20.00		8.14	8.14		33.11	33.11		84.3	83.5		6.33	6.28		5.66	5.64		8	
12/12/2015	0:01	Cloudy	Middle	2.5	20.80	20.80	20.75	8.20	8.20	8.21	33.47	33.47	33.47	85.7	86.1	86.4	6.31	6.34	6.36	7.59	7.55	7.54	3	2.50
	0:02		Middle	2.5	20.70	20.70		8.22	8.22		33.48	33.48		86.5	87.2		6.37	6.43		7.53	7.47		2	
14/12/2015	1:02	Cloudy	Middle	2.5	21.10	21.10	21.05	8.25	8.25	8.27	32.74	32.74	32.75	82.7	83.7	82.9	6.09	6.15	6.10	4.89	4.61	4.66	6	6.00
	1:03		Middle	2.5	21.00	21.00		8.28	8.28		32.75	32.75		82.5	82.5		6.07	6.08		4.58	4.55		6	
16/12/2015	4:20	Fine	Middle	2.5	18.70	18.70	18.70	8.27	8.27	8.28	32.96	32.96	32.97	80.8	79.4	79.9	6.21	6.11	6.15	10.27	10.29	<u>10.23</u>	5	5.50
	4:21		Middle	2.5	18.70	18.70		8.29	8.29		32.97	32.97		80.0	79.4		6.15	6.11		10.24	10.11		6	
18/12/2015	6:00	Fine	Middle	3.0	15.70	15.70	15.60	8.15	8.15	8.18	33.05	33.05	33.05	85.4	86.5	85.2	6.97	7.07	6.96	10.55	10.50	<u>10.51</u>	7	6.00
	6:01		Middle	3.0	15.50	15.50		8.20	8.20		33.05	33.05		84.5	84.2		6.90	6.88		10.48	10.52		5	
21/12/2015	8:00	Cloudy	Middle	3.5	19.70	19.70	19.65	8.22	8.22	8.27	32.96	32.96	32.96	91.5	90.5	91.0	6.90	6.83	6.86	8.01	8.01	8.01	5	5.00
	8:02		Middle	3.5	19.60	19.60		8.31	8.31		32.96	32.96		90.7	91.2		6.84	6.88		8.01	8.00		5	
23/12/2015	9:20	Fine	Middle	3.5	20.80	20.80	20.80	8.29	8.29	8.31	32.88	32.88	32.88	80.4	80.2	79.7	5.93	5.92	5.88	7.42	7.43	7.44	7	6.50
	9:22		Middle	3.5	20.80	20.80		8.32	8.32		32.87	32.87		79.6	78.7		5.87	5.81		7.44	7.45		6	
26/12/2015	0:02	Cloudy	Middle	2.5	19.20	19.20	19.20	7.98	7.98	7.99	32.44	32.44	32.46	84.3	85.3	84.5	6.42	6.50	6.44	14.29	14.32	<u>14.32</u>	8	8.00
	0:03		Middle	2.5	19.20	19.20		8.02	7.99		32.47	32.47		84.9	83.4		6.47	6.36		14.36	14.30		8	

Remarks:  
Single underline denotes exceedance over Action Level.  
Double underline denotes exceedance over Limit Level.

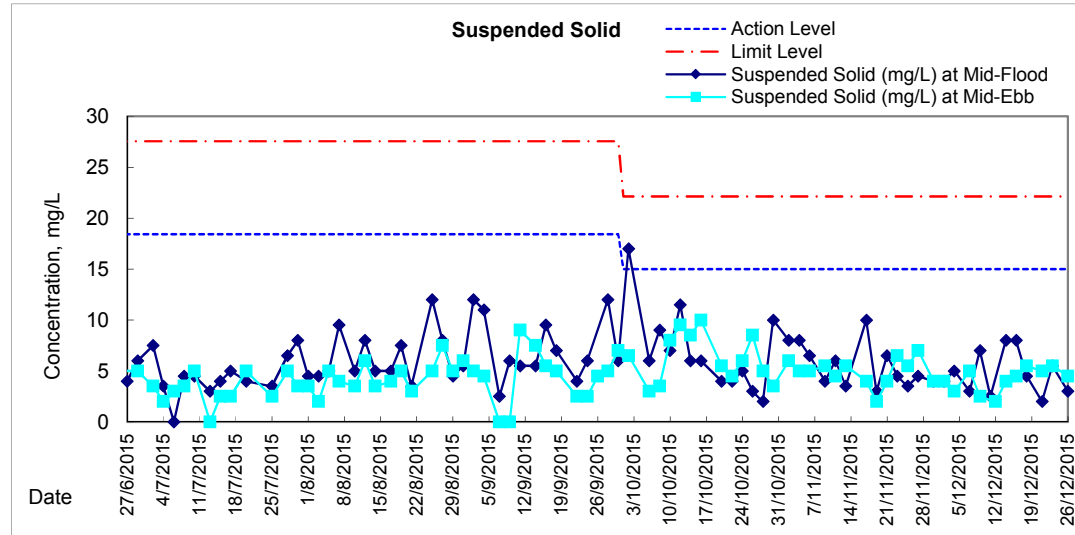
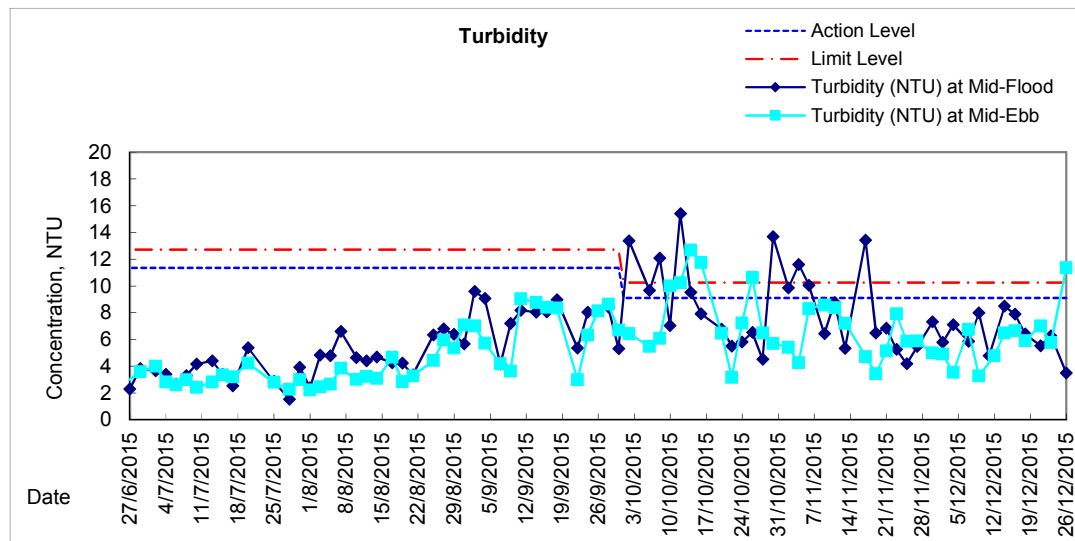
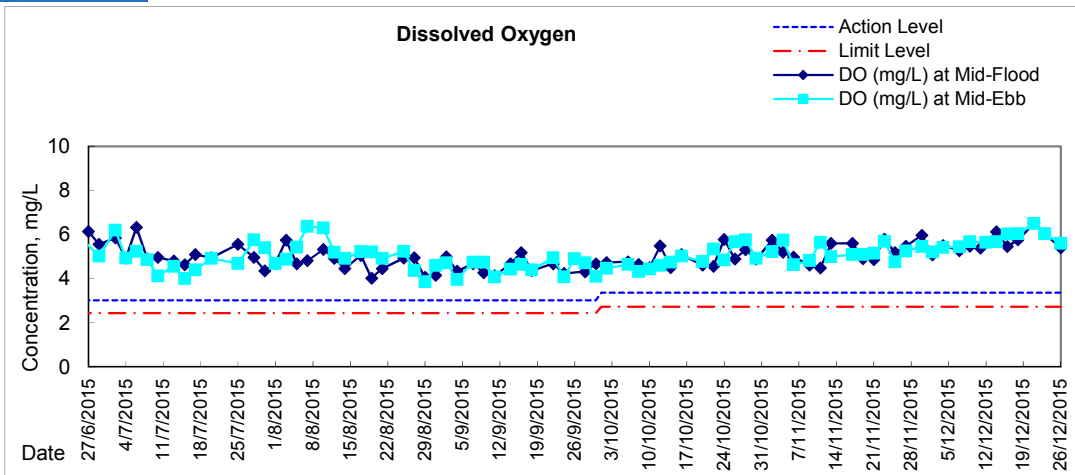




# Graphic Presentation of Water Quality Result of WSD19 - Sheung Wan

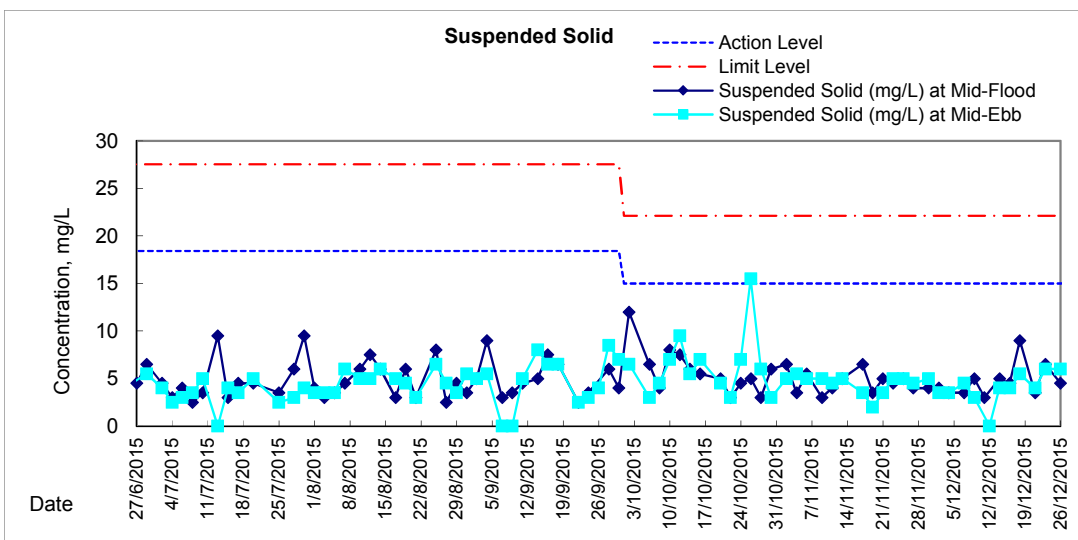
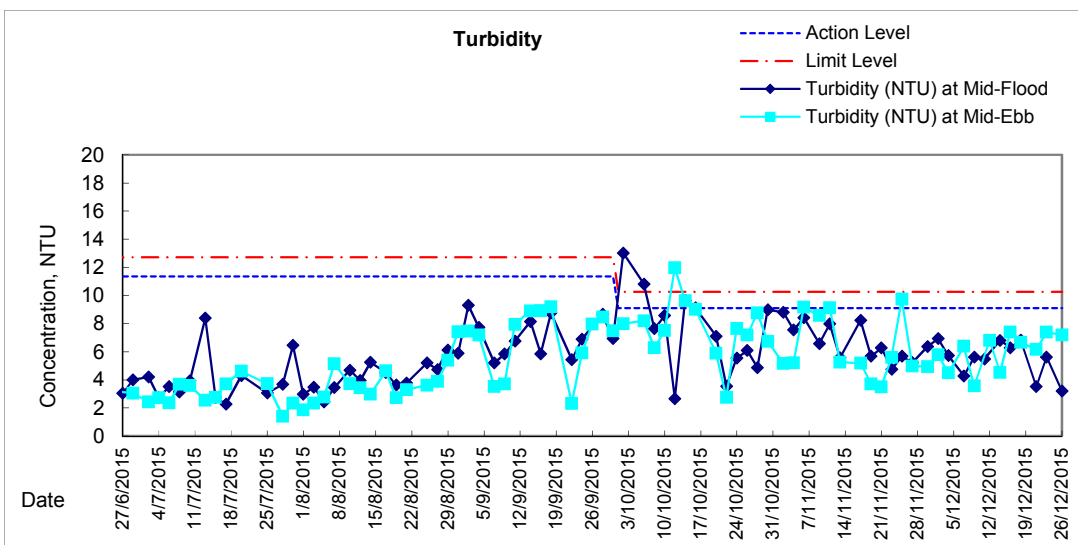
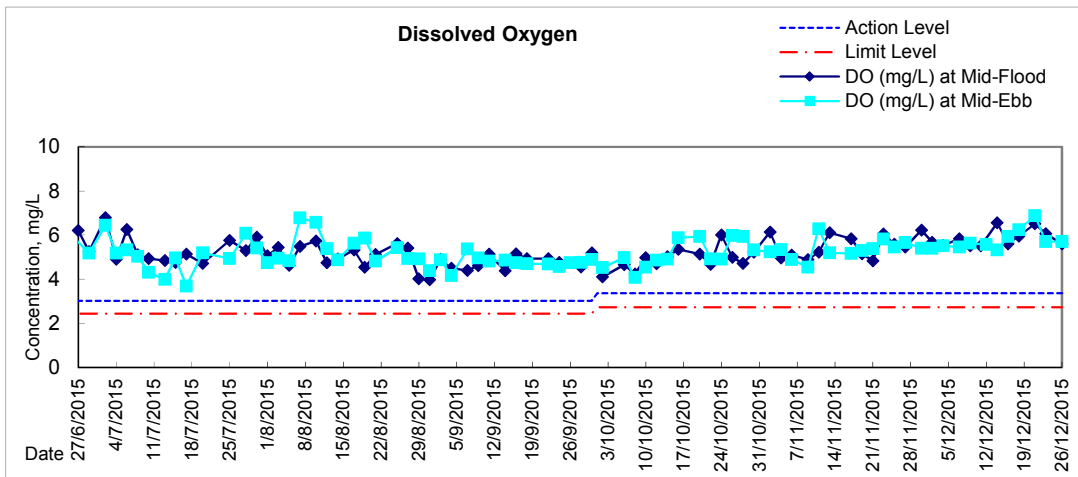


### Graphic Presentation of Water Quality Result of C1 - HKCEC



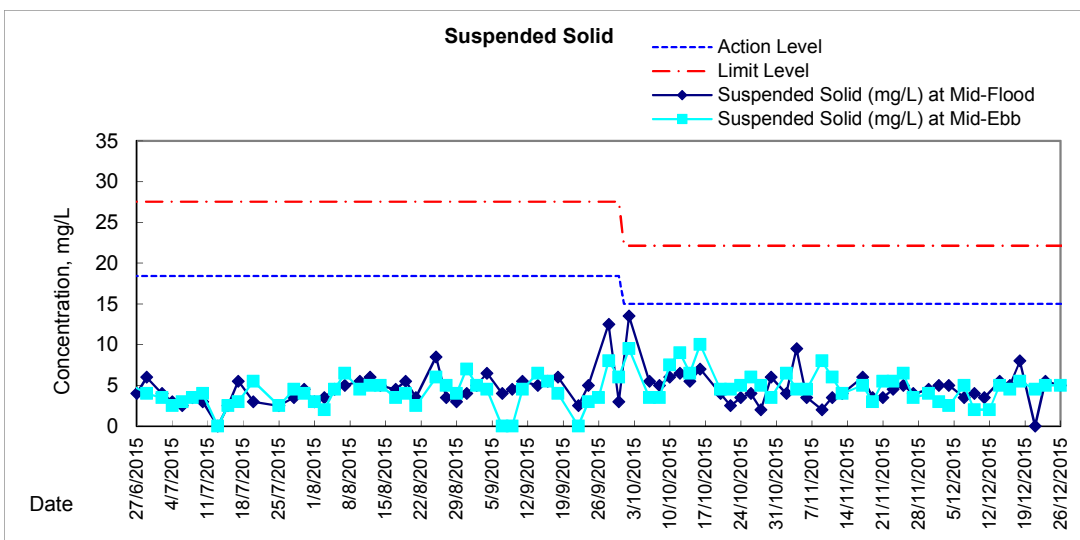
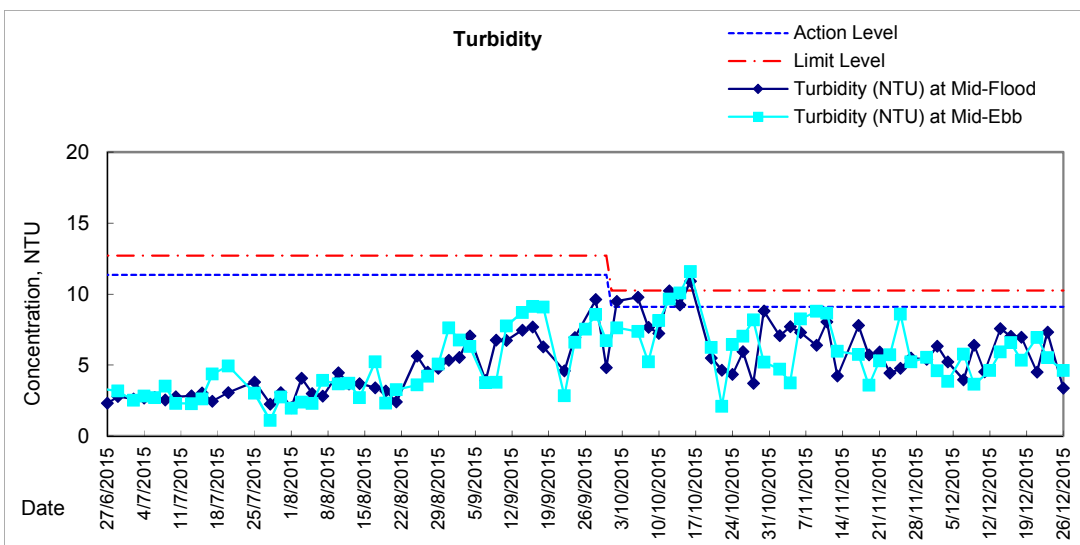
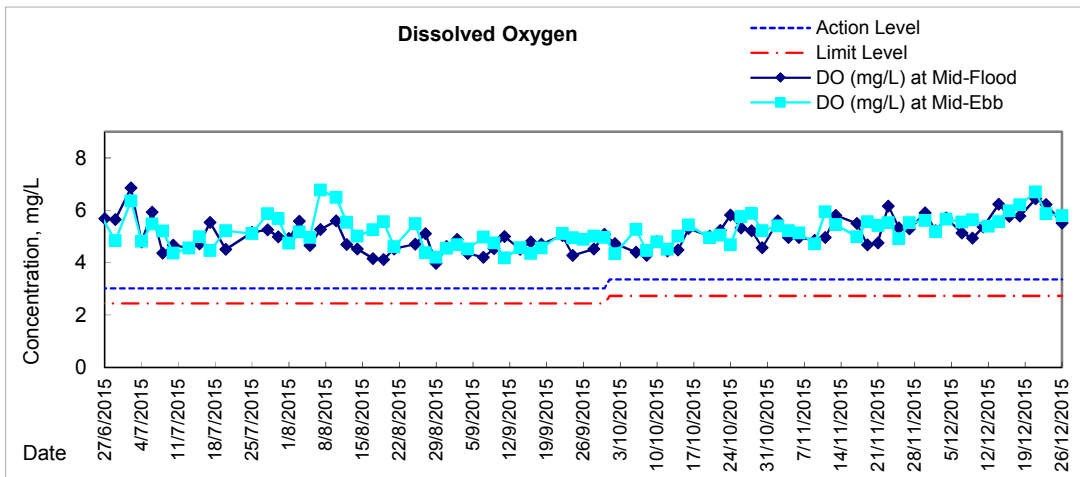


# Graphic Presentation of Water Quality Result of P1 - HKCEC Phase I



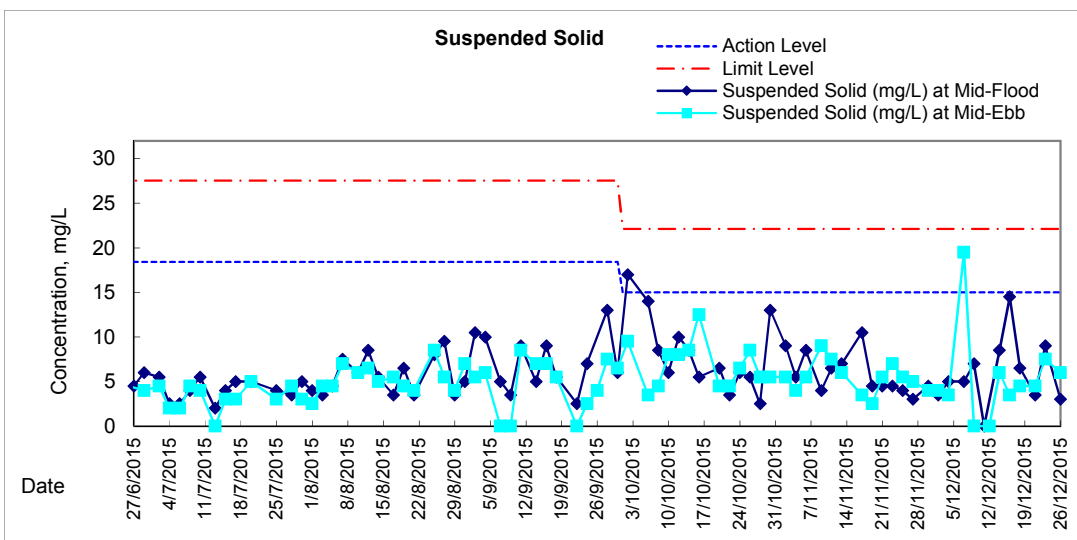
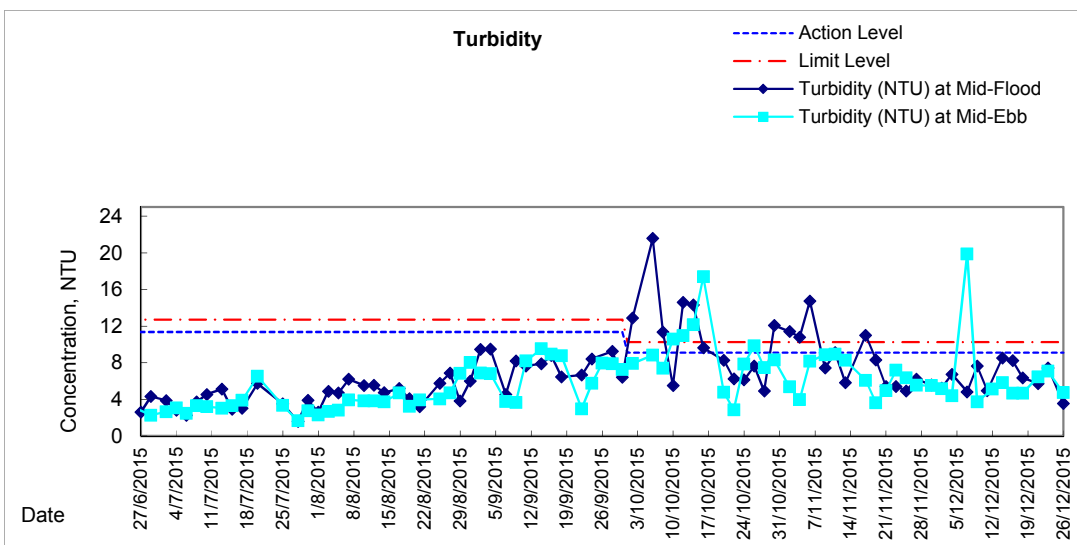
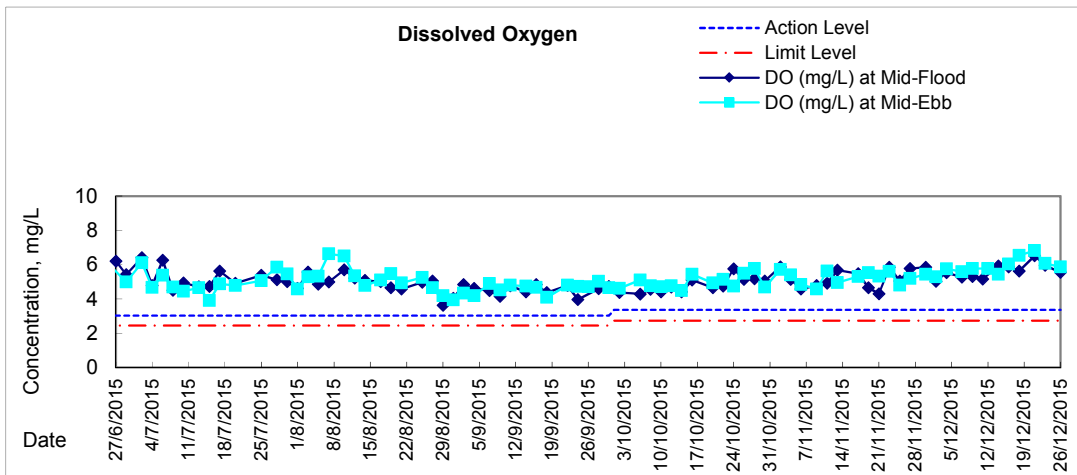


# Graphic Presentation of Water Quality Result of P3 - APA



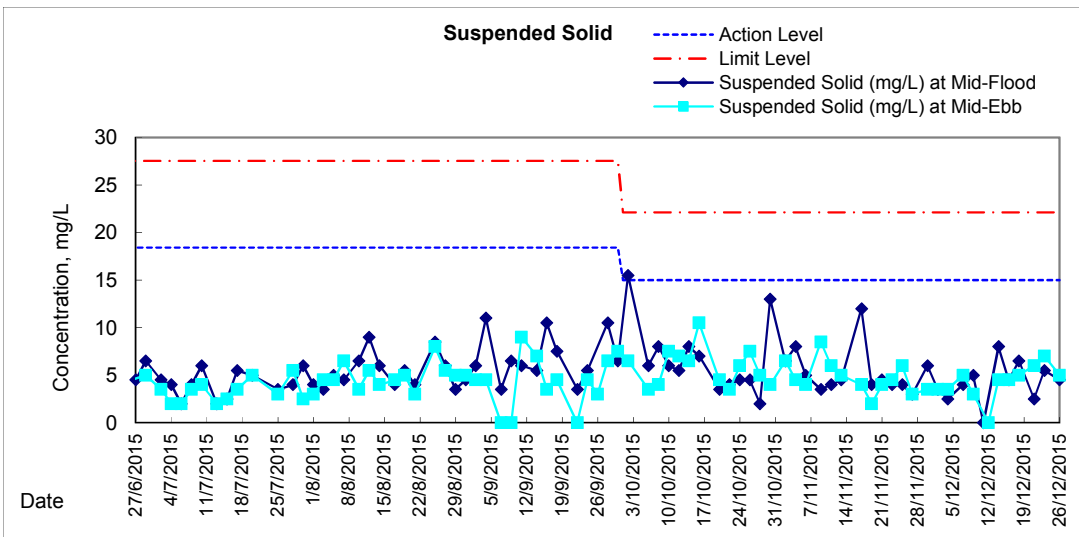
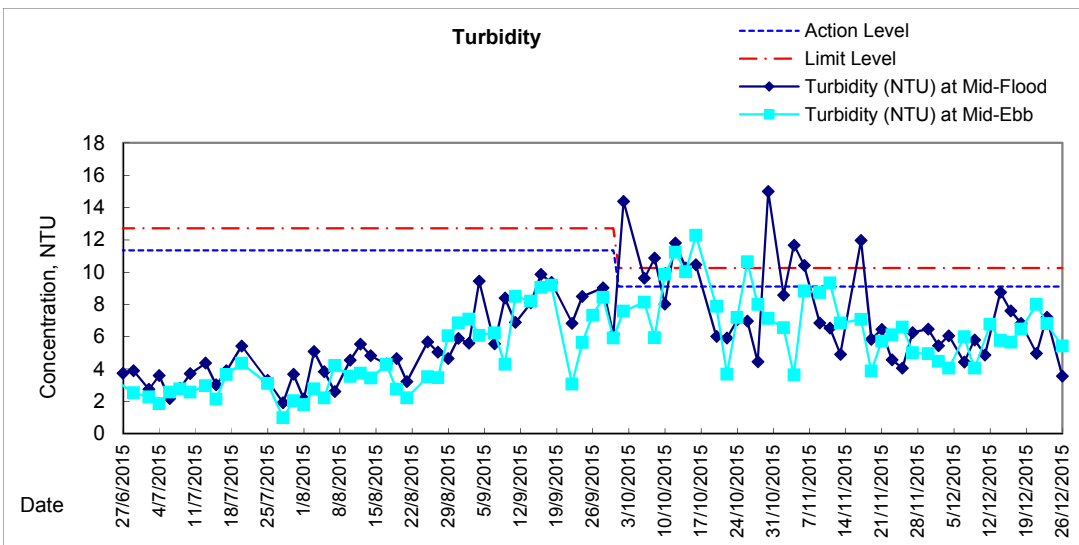
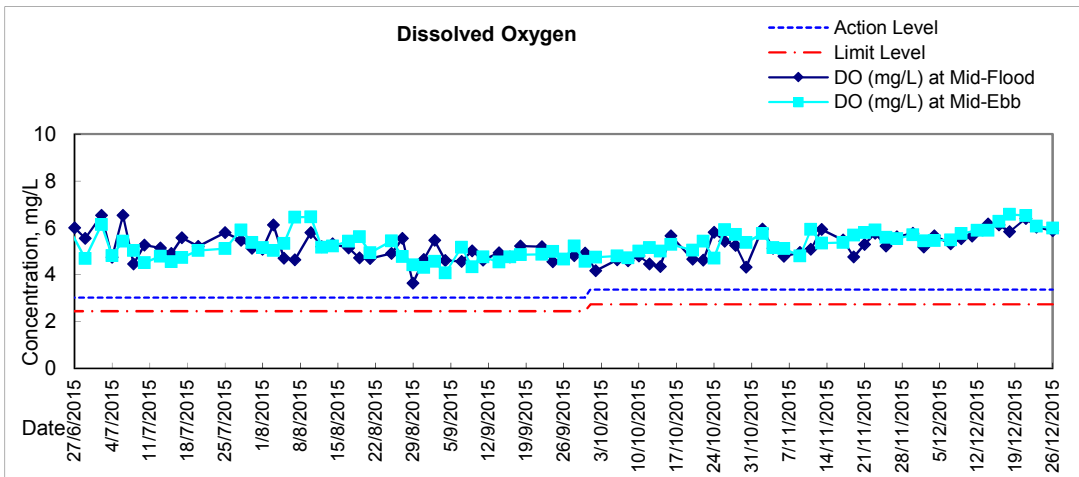


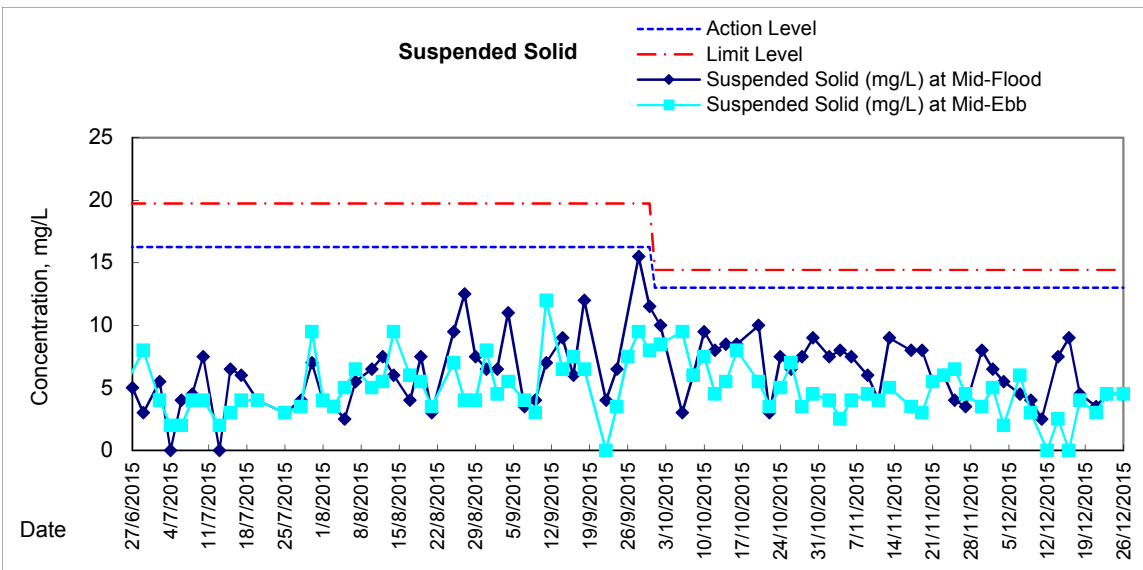
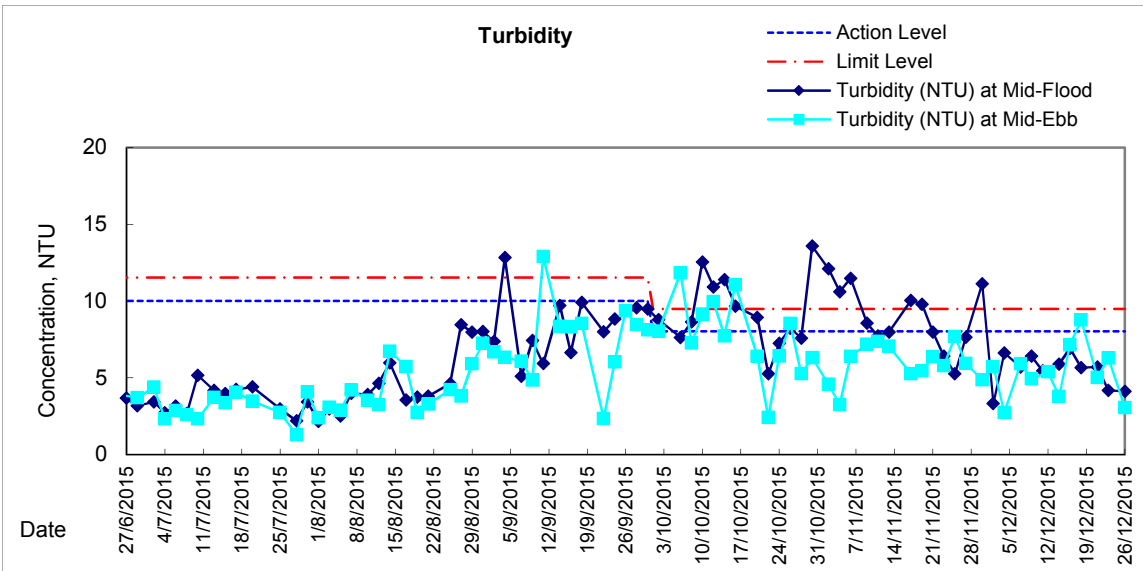
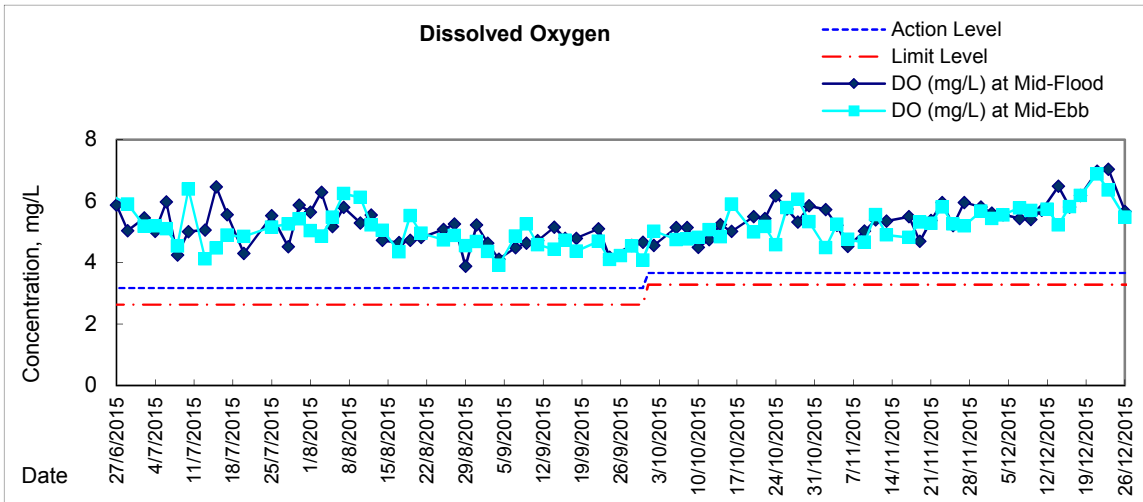
### Graphic Presentation of Water Quality Result of P5 - WCT / RT / IT





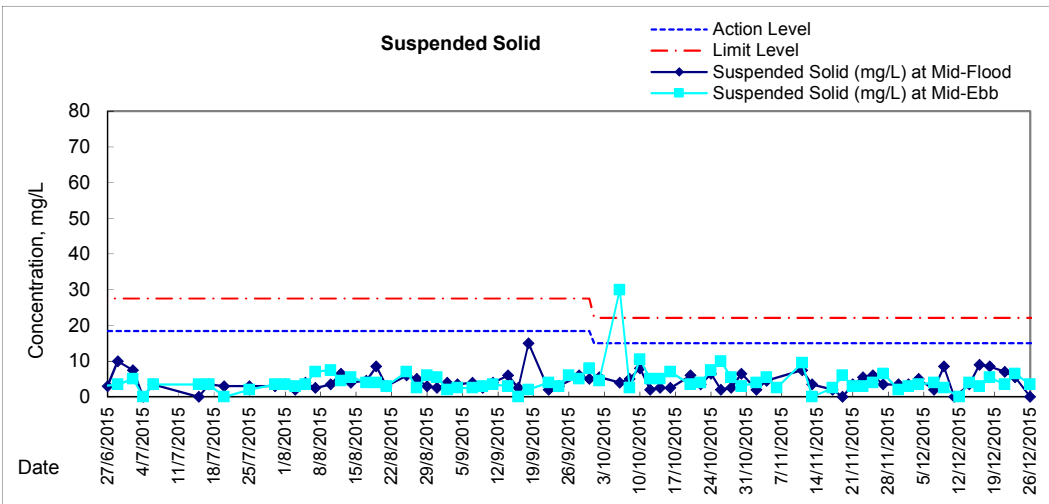
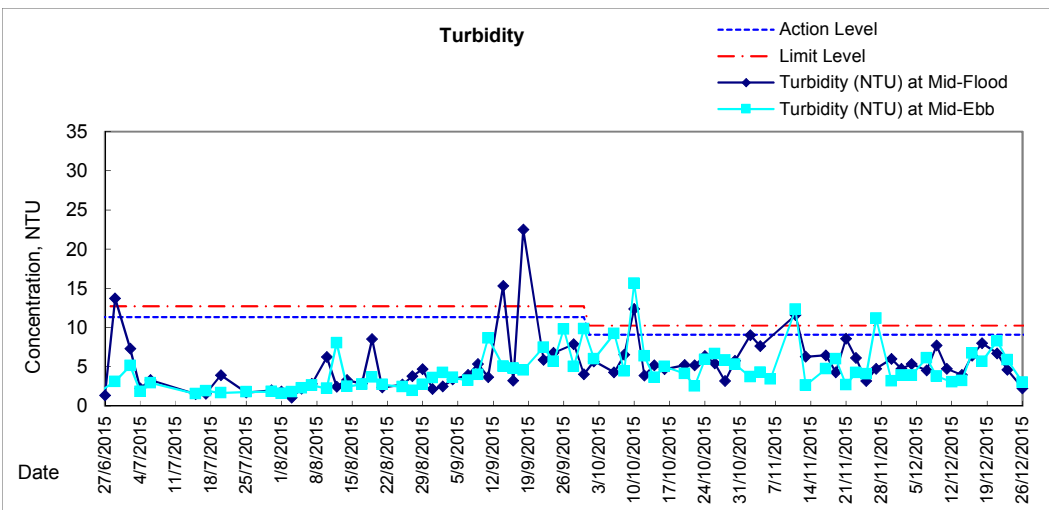
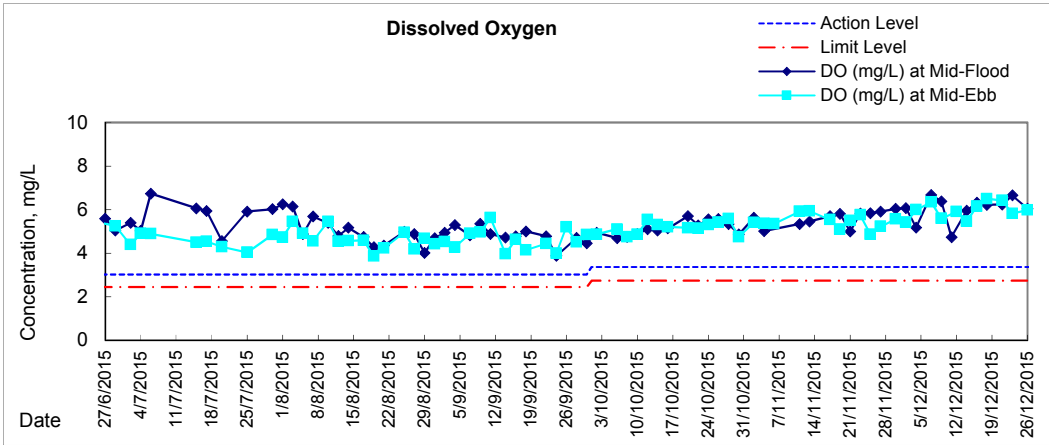
### Graphic Presentation of Water Quality Result of P4 - SOC







# Graphic Presentation of Water Quality Result of C7 - Windsor House







**Water Monitoring Result at C6 - Excelsior Hotel  
Mid-Flood Tide**

Date	Time	Weather Condition	Sampling Depth m		Water Temperature °C			pH			Salinity ppt		DO Saturation %			DO mg/L			
					Value	Average	Value	Average	Value	Average	Value	Average	Value	Average					
30/11/2015	-	Fine	Surface	-	-	-	-	-	-	-	-	-	-	-	-	-	-	-	
	12:00		Middle	1.5	25.40	25.40	25.4	8.27	8.27	8.3	31.34	31.34	31.3	84.9	82.7	83.8	5.94	5.78	5.86
	-		Bottom	-	-	-	-	-	-	-	-	-	-	-	-	-	-	-	-
2/12/2015	-	Fine	Surface	-	-	-	-	-	-	-	-	-	-	-	-	-	-	-	
	16:15		Middle	1.5	24.40	24.40	24.4	8.28	8.28	8.3	30.78	30.78	30.8	82.3	82.5	82.4	5.77	5.78	5.78
	-		Bottom	-	-	-	-	-	-	-	-	-	-	-	-	-	-	-	-
4/12/2015	-	Fine	Surface	-	-	-	-	-	-	-	-	-	-	-	-	-	-	-	
	14:59		Middle	1.5	23.20	23.20	23.2	8.33	8.33	8.3	31.10	31.10	31.1	77.0	75.1	76.1	5.49	5.37	5.43
	-		Bottom	-	-	-	-	-	-	-	-	-	-	-	-	-	-	-	-
7/12/2015	15:50	Fine	Surface	1.0	22.60	22.60	22.6	8.45	8.45	8.5	31.04	31.04	31.0	82.3	82.5	82.4	5.95	5.96	5.96
	-		Middle	2.0	-	-	-	-	-	-	-	-	-	-	-	-	-	-	-
	15:52		Bottom	3.0	22.40	22.40	22.4	8.49	8.49	8.5	26.97	26.97	27.0	90.2	90.8	90.5	6.70	6.78	6.74
9/12/2015	17:15	Rainy	Surface	1.0	21.20	21.20	21.2	8.51	8.51	8.5	26.22	26.22	26.2	83.7	83.8	83.8	6.38	6.39	6.39
	-		Middle	2.0	-	-	-	-	-	-	-	-	-	-	-	-	-	-	-
	17:17		Bottom	3.0	21.10	21.10	21.1	8.48	8.48	8.5	28.80	28.80	28.8	84.0	83.7	83.9	6.26	6.24	6.25
11/12/2015	-	Fine	Surface	-	-	-	-	-	-	-	-	-	-	-	-	-	-	-	
	14:40		Middle	1.5	22.60	22.60	22.6	8.33	8.33	8.3	31.90	31.90	31.9	90.9	90.8	90.9	6.52	6.51	6.52
	-		Bottom	-	-	-	-	-	-	-	-	-	-	-	-	-	-	-	-
14/12/2015	-	Cloudy	Surface	-	-	-	-	-	-	-	-	-	-	-	-	-	-	-	
	10:20		Middle	1.5	21.90	21.90	21.9	8.25	8.25	8.3	31.64	31.64	31.6	86.2	85.5	85.9	6.26	6.23	6.25
	-		Bottom	-	-	-	-	-	-	-	-	-	-	-	-	-	-	-	-
16/12/2015	11:20	Fine	Surface	1.0	20.40	20.40	20.4	8.36	8.36	8.4	31.78	31.78	31.8	80.4	81.0	80.7	6.03	6.08	6.06
	-		Middle	2.0	-	-	-	-	-	-	-	-	-	-	-	-	-	-	-
	11:22		Bottom	3.0	20.50	20.80	20.7	8.37	8.37	8.4	31.93	31.93	31.9	88.6	88.1	88.4	6.56	6.54	6.55
18/12/2015	-	Fine	Surface	-	-	-	-	-	-	-	-	-	-	-	-	-	-	-	
	15:48		Middle	1.0	20.10	20.10	20.1	8.28	8.28	8.3	32.19	32.19	32.2	87.5	85.3	86.4	6.57	6.41	6.49
	-		Bottom	-	-	-	-	-	-	-	-	-	-	-	-	-	-	-	-
21/12/2015	-	Fine	Surface	-	-	-	-	-	-	-	-	-	-	-	-	-	-	-	
	14:41		Middle	1.0	20.60	20.60	20.6	8.21	8.21	8.2	31.69	31.69	31.7	83.8	82.4	83.1	6.25	6.14	6.20
	-		Bottom	-	-	-	-	-	-	-	-	-	-	-	-	-	-	-	-
23/12/2015	15:35	Fine	Surface	1.0	21.00	21.00	21.0	8.32	8.32	8.3	31.03	31.03	31.0	79.2	79.9	79.6	5.88	5.93	5.91
	-		Middle	2.0	-	-	-	-	-	-	-	-	-	-	-	-	-	-	-
	15:37		Bottom	3.0	21.00	21.00	21.0	8.33	8.33	8.3	30.98	30.98	31.0	79.3	78.7	79.0	5.83	5.78	5.81
26/12/2015	-	Cloudy	Surface	-	-	-	-	-	-	-	-	-	-	-	-	-	-	-	
	7:00		Middle	1.5	19.50	19.50	19.5	8.26	8.26	8.3	29.16	29.16	29.2	55.7	56.1	55.9	4.28	4.30	4.29
	-		Bottom	-	-	-	-	-	-	-	-	-	-	-	-	-	-	-	-

Remarks:  
Single underline denotes exceedance over Action Level.  
Double underline denotes exceedance over Limit Level.



**Water Monitoring Result at Ex-WPCWA SW - South-western corners of ex-Public Cargo Works Area  
Mid-Flood Tide**

Date	Time	Weather Condition	Sampling Depth m		Water Temperature °C			pH			Salinity ppt		DO Saturation %			DO mg/L			
					Value	Average	Value	Average	Value	Average	Value	Average	Value	Average	Value	Average			
30/11/2015	-	Fine	Surface	-	-	-	-	-	-	-	-	-	-	-	-	-	-	-	-
	11:48		Middle	1.0	24.20	24.20	24.2	8.30	8.30	8.3	30.99	30.99	31.0	73.1	72.2	72.7	5.14	5.08	5.11
	-		Bottom	-	-	-	-	-	-	-	-	-	-	-	-	-	-	-	-
2/12/2015	-	Fine	Surface	-	-	-	-	-	-	-	-	-	-	-	-	-	-	-	-
	16:00		Middle	1.0	24.30	24.30	24.3	8.36	8.36	8.4	31.21	31.21	31.2	72.0	72.1	72.1	5.05	5.05	5.05
	-		Bottom	-	-	-	-	-	-	-	-	-	-	-	-	-	-	-	-
4/12/2015	-	Fine	Surface	-	-	-	-	-	-	-	-	-	-	-	-	-	-	-	-
	14:48		Middle	1.0	23.40	23.40	23.4	8.37	8.37	8.4	30.27	30.27	30.3	75.8	75.3	75.6	5.43	5.40	5.42
	-		Bottom	-	-	-	-	-	-	-	-	-	-	-	-	-	-	-	-
7/12/2015	-	Fine	Surface	-	-	-	-	-	-	-	-	-	-	-	-	-	-	-	-
	15:25		Middle	1.0	22.60	22.60	22.6	8.45	8.45	8.5	32.35	32.35	32.4	80.3	80.4	80.4	5.75	5.76	5.76
	-		Bottom	-	-	-	-	-	-	-	-	-	-	-	-	-	-	-	-
9/12/2015	-	Rainy	Surface	-	-	-	-	-	-	-	-	-	-	-	-	-	-	-	-
	16:42		Middle	1.0	21.60	21.60	21.6	8.41	8.41	8.4	29.25	29.25	29.3	78.9	78.9	78.9	5.84	5.84	5.84
	-		Bottom	-	-	-	-	-	-	-	-	-	-	-	-	-	-	-	-
11/12/2015	-	Fine	Surface	-	-	-	-	-	-	-	-	-	-	-	-	-	-	-	-
	18:00		Middle	1.5	22.20	22.20	22.2	8.40	8.40	8.4	32.25	32.25	32.3	76.6	76.4	76.5	5.54	5.52	5.53
	-		Bottom	-	-	-	-	-	-	-	-	-	-	-	-	-	-	-	-
14/12/2015	-	Cloudy	Surface	-	-	-	-	-	-	-	-	-	-	-	-	-	-	-	-
	10:06		Middle	1.0	22.00	22.20	22.1	8.41	8.41	8.4	22.87	22.87	22.9	54.1	53.8	54.0	4.13	4.10	4.12
	-		Bottom	-	-	-	-	-	-	-	-	-	-	-	-	-	-	-	-
16/12/2015	-	Fine	Surface	-	-	-	-	-	-	-	-	-	-	-	-	-	-	-	-
	11:08		Middle	1.0	20.90	20.90	20.9	8.42	8.42	8.4	26.33	26.33	26.3	56.3	55.5	55.9	4.31	4.25	4.28
	-		Bottom	-	-	-	-	-	-	-	-	-	-	-	-	-	-	-	-
18/12/2015	-	Fine	Surface	-	-	-	-	-	-	-	-	-	-	-	-	-	-	-	-
	11:10		Middle	1.0	19.80	19.80	19.8	8.38	8.37	8.4	24.11	24.11	24.1	63.8	63.8	63.8	5.06	5.07	5.07
	-		Bottom	-	-	-	-	-	-	-	-	-	-	-	-	-	-	-	-
21/12/2015	-	Fine	Surface	-	-	-	-	-	-	-	-	-	-	-	-	-	-	-	-
	14:27		Middle	1.0	20.90	20.90	20.9	8.44	8.44	8.4	24.13	24.13	24.1	47.0	47.4	47.2	3.64	3.67	<u>3.66</u>
	-		Bottom	-	-	-	-	-	-	-	-	-	-	-	-	-	-	-	-
23/12/2015	-	Fine	Surface	-	-	-	-	-	-	-	-	-	-	-	-	-	-	-	-
	15:00		Middle	1.0	21.50	21.50	21.5	8.37	8.37	8.4	24.88	24.88	24.9	58.9	57.1	58.0	4.50	4.36	4.43
	-		Bottom	-	-	-	-	-	-	-	-	-	-	-	-	-	-	-	-
26/12/2015	-	Cloudy	Surface	-	-	-	-	-	-	-	-	-	-	-	-	-	-	-	-
	8:07		Middle	1.5	19.50	19.50	19.5	8.42	8.42	8.4	23.14	23.15	23.1	59.3	61.5	60.4	4.75	4.94	4.85
	-		Bottom	-	-	-	-	-	-	-	-	-	-	-	-	-	-	-	-

Remarks:  
Single underline denotes exceedance over Action Level.  
Double underline denotes exceedance over Limit Level.



**Water Monitoring Result at C6 - Excelsior Hotel  
Mid-Ebb Tide**

Date	Time	Weather Condition	Sampling Depth		Water Temperature			pH			Salinity		DO Saturation			DO			
					°C			-			ppt		%			mg/L			
			m	Value	Average	Value	Average	Value	Average	Value	Average	Value	Average	Value	Average				
30/11/2015	-	Fine	Surface	-	-	-	-	-	-	-	-	-	-	-	-	-	-	-	
	2:15		Middle	1.5	22.80	22.80	22.8	8.43	8.43	8.4	29.04	29.04	29.0	69.0	68.5	68.8	5.03	4.99	5.01
	-		Bottom	-	-	-	-	-	-	-	-	-	-	-	-	-	-	-	-
2/12/2015	-	Cloudy	Surface	-	-	-	-	-	-	-	-	-	-	-	-	-	-	-	
	4:30		Middle	1.5	23.20	23.20	23.2	8.19	8.19	8.2	27.62	27.62	27.6	48.8	49.3	49.1	3.56	3.60	3.58
	-		Bottom	-	-	-	-	-	-	-	-	-	-	-	-	-	-	-	-
4/12/2015	-	Cloudy	Surface	-	-	-	-	-	-	-	-	-	-	-	-	-	-	-	
	3:15		Middle	1.5	21.30	21.30	21.3	8.24	8.24	8.2	26.88	26.88	26.9	48.4	49.6	49.0	3.67	3.77	3.72
	-		Bottom	-	-	-	-	-	-	-	-	-	-	-	-	-	-	-	-
7/12/2015	-	Fine	Surface	-	-	-	-	-	-	-	-	-	-	-	-	-	-	-	
	10:45		Middle	1.5	22.10	22.10	22.1	8.47	8.47	8.5	29.42	29.42	29.4	80.0	79.6	79.8	5.89	5.86	5.88
	-		Bottom	-	-	-	-	-	-	-	-	-	-	-	-	-	-	-	-
9/12/2015	-	Cloudy	Surface	-	-	-	-	-	-	-	-	-	-	-	-	-	-	-	
	2:28		Middle	1.0	20.70	20.70	20.7	8.22	8.22	8.2	29.00	29.00	29.0	65.3	66.3	65.8	4.94	5.04	4.99
	-		Bottom	-	-	-	-	-	-	-	-	-	-	-	-	-	-	-	-
12/12/2015	-	Cloudy	Surface	-	-	-	-	-	-	-	-	-	-	-	-	-	-	-	
	2:15		Middle	1.0	20.80	20.80	20.8	8.17	8.17	8.2	25.35	25.35	25.4	52.0	51.6	51.8	4.00	3.96	3.98
	-		Bottom	-	-	-	-	-	-	-	-	-	-	-	-	-	-	-	-
14/12/2015	-	Cloudy	Surface	-	-	-	-	-	-	-	-	-	-	-	-	-	-	-	
	2:47		Middle	1.0	21.20	21.20	21.2	8.38	8.38	8.4	26.73	26.73	26.7	58.4	58.2	58.3	4.44	4.42	4.43
	-		Bottom	-	-	-	-	-	-	-	-	-	-	-	-	-	-	-	-
16/12/2015	-	Fine	Surface	-	-	-	-	-	-	-	-	-	-	-	-	-	-	-	
	2:46		Middle	1.0	18.30	18.30	18.3	8.30	8.30	8.3	25.72	25.76	25.7	49.9	49.6	49.8	4.03	4.00	4.02
	-		Bottom	-	-	-	-	-	-	-	-	-	-	-	-	-	-	-	-
18/12/2015	-	Fine	Surface	-	-	-	-	-	-	-	-	-	-	-	-	-	-	-	
	4:27		Middle	1.5	16.50	16.50	16.5	8.37	8.37	8.4	29.52	29.54	29.5	61.3	61.6	61.5	5.00	5.04	5.02
	-		Bottom	-	-	-	-	-	-	-	-	-	-	-	-	-	-	-	-
21/12/2015	-	Cloudy	Surface	-	-	-	-	-	-	-	-	-	-	-	-	-	-	-	
	10:20		Middle	1.5	20.30	20.30	20.3	8.33	8.33	8.3	31.41	31.41	31.4	85.9	85.2	85.6	6.55	6.49	6.52
	-		Bottom	-	-	-	-	-	-	-	-	-	-	-	-	-	-	-	-
23/12/2015	-	Fine	Surface	-	-	-	-	-	-	-	-	-	-	-	-	-	-	-	
	11:01		Middle	1.5	20.90	20.90	20.9	8.25	8.25	8.3	31.75	31.75	31.8	78.1	76.7	77.4	5.79	5.69	5.74
	-		Bottom	-	-	-	-	-	-	-	-	-	-	-	-	-	-	-	-
26/12/2015	-	Cloudy	Surface	-	-	-	-	-	-	-	-	-	-	-	-	-	-	-	
	1:50		Middle	1.0	19.30	19.30	19.3	8.04	8.04	8.0	25.80	25.80	25.8	43.2	43.7	43.5	3.42	3.96	3.69
	-		Bottom	-	-	-	-	-	-	-	-	-	-	-	-	-	-	-	-

Remarks:  
 Single underline denotes exceedance over Action Level.  
 Double underline denotes exceedance over Limit Level.



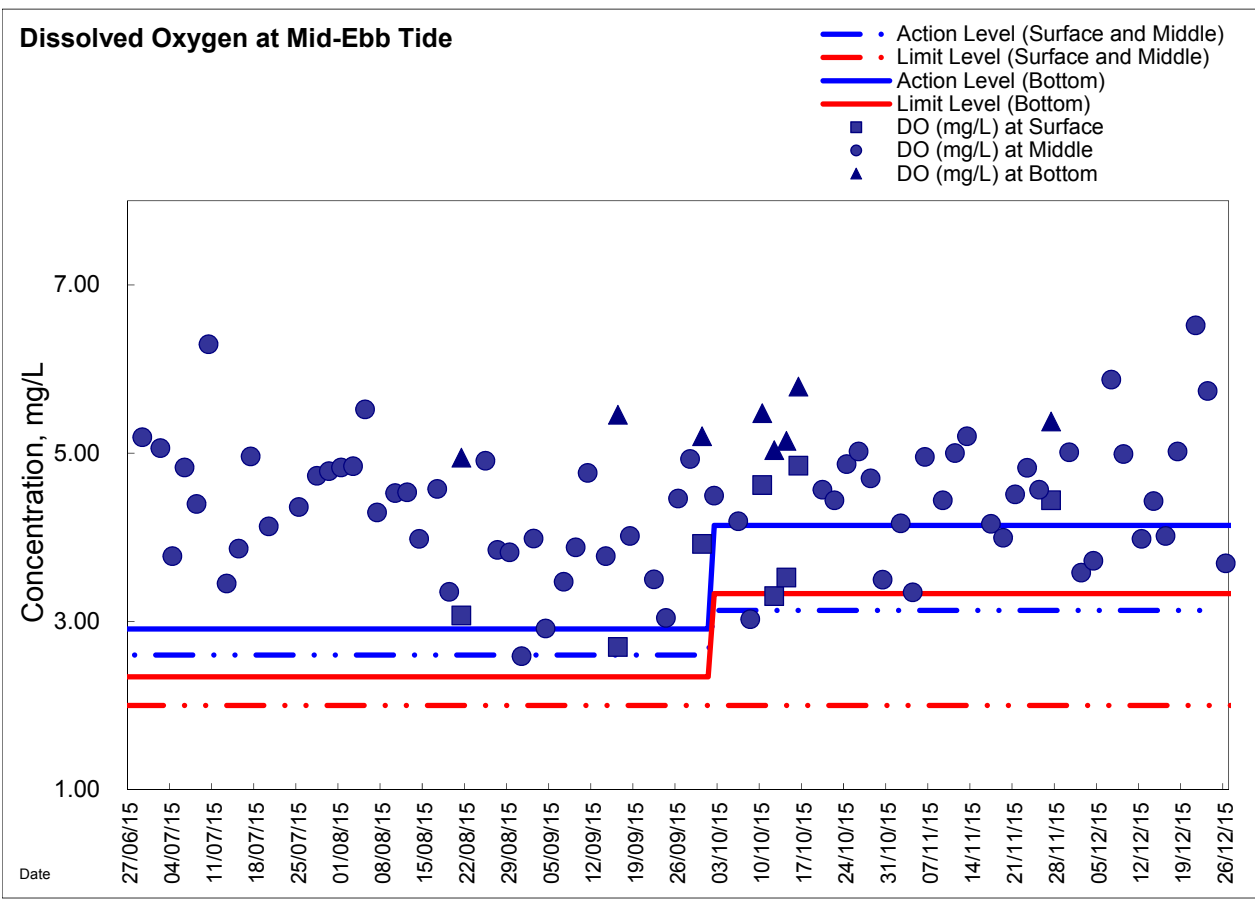
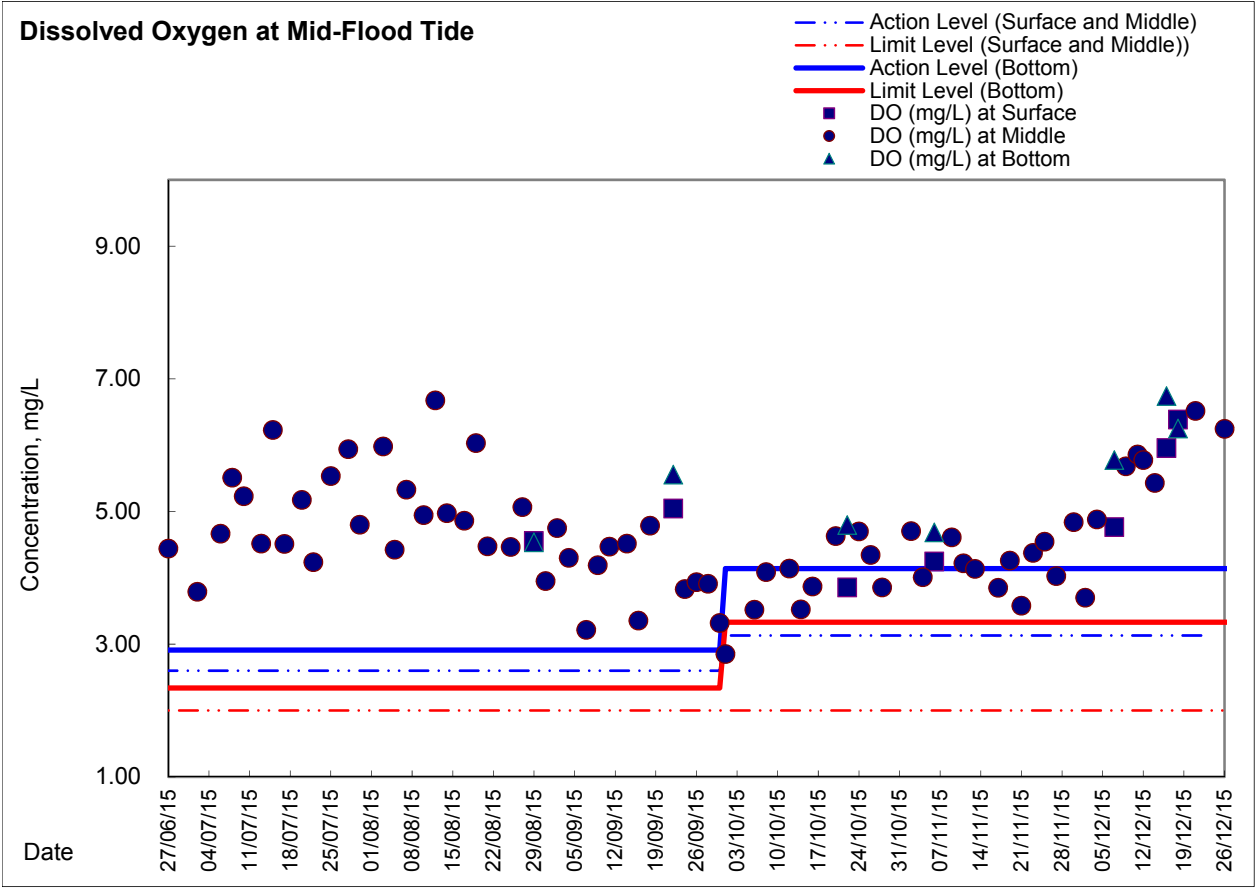
**Water Monitoring Result at Ex-WPCWA SW - South-western corners of ex-Public Cargo Works Area  
Mid-Ebb Tide**

Date	Time	Weather Condition	Sampling Depth		Water Temperature			pH		Salinity		DO Saturation		DO					
			m	°C			-		ppt		%		mg/L						
				Value	Average		Value	Average	Value	Average	Value	Average	Value	Average					
30/11/2015	-	Fine	Surface	-	-	-	-	-	-	-	-	-	-	-	-	-	-	-	
	3:32		Middle	1.5	23.00	23.00	23.0	8.36	8.36	8.4	23.21	23.21	23.2	55.3	55.7	55.5	4.13	4.16	4.15
	-		Bottom	-	-	-	-	-	-	-	-	-	-	-	-	-	-	-	-
2/12/2015	-	z	Surface	-	-	-	-	-	-	-	-	-	-	-	-	-	-	-	-
	2:35		Middle	1.5	23.30	23.30	23.3	8.28	8.28	8.3	19.46	19.46	19.5	56.5	54.9	55.7	4.10	4.04	4.07
	-		Bottom	-	-	-	-	-	-	-	-	-	-	-	-	-	-	-	-
4/12/2015	-	Cloudy	Surface	-	-	-	-	-	-	-	-	-	-	-	-	-	-	-	-
	3:45		Middle	1.5	21.30	21.30	21.3	8.42	8.42	8.4	20.74	20.74	20.7	57.2	59.1	58.2	4.79	4.83	4.81
	-		Bottom	-	-	-	-	-	-	-	-	-	-	-	-	-	-	-	-
7/12/2015	-	Fine	Surface	-	-	-	-	-	-	-	-	-	-	-	-	-	-	-	-
	10:25		Middle	1.0	22.40	22.40	22.4	8.42	8.42	8.4	31.92	31.92	31.9	71.9	71.2	71.6	5.19	5.14	5.17
	-		Bottom	-	-	-	-	-	-	-	-	-	-	-	-	-	-	-	-
9/12/2015	-	Cloudy	Surface	-	-	-	-	-	-	-	-	-	-	-	-	-	-	-	-
	2:11		Middle	1.0	20.60	20.60	20.6	8.44	8.44	8.4	16.77	16.77	16.8	61.5	59.5	60.5	4.90	4.81	4.86
	-		Bottom	-	-	-	-	-	-	-	-	-	-	-	-	-	-	-	-
12/12/2015	-	Cloudy	Surface	-	-	-	-	-	-	-	-	-	-	-	-	-	-	-	-
	3:21		Middle	1.0	21.10	21.10	21.1	8.21	8.21	8.2	26.39	26.39	26.4	63.4	62.5	63.0	4.92	4.83	4.88
	-		Bottom	-	-	-	-	-	-	-	-	-	-	-	-	-	-	-	-
14/12/2015	-	Cloudy	Surface	-	-	-	-	-	-	-	-	-	-	-	-	-	-	-	-
	4:11		Middle	1.0	21.70	21.70	21.7	8.48	8.48	8.5	18.91	18.91	18.9	52.9	53.2	53.1	4.03	4.09	4.06
	-		Bottom	-	-	-	-	-	-	-	-	-	-	-	-	-	-	-	-
16/12/2015	-	Fine	Surface	-	-	-	-	-	-	-	-	-	-	-	-	-	-	-	-
	3:22		Middle	1.0	18.60	18.60	18.6	8.39	8.39	8.4	25.28	25.28	25.3	52.3	51.4	51.9	4.20	4.11	4.16
	-		Bottom	-	-	-	-	-	-	-	-	-	-	-	-	-	-	-	-
18/12/2015	-	Fine	Surface	-	-	-	-	-	-	-	-	-	-	-	-	-	-	-	-
	5:05		Middle	1.5	16.50	16.50	16.5	8.36	8.36	8.4	24.55	24.55	24.6	59.5	58.9	59.2	4.46	4.40	4.43
	-		Bottom	-	-	-	-	-	-	-	-	-	-	-	-	-	-	-	-
21/12/2015	-	Cloudy	Surface	-	-	-	-	-	-	-	-	-	-	-	-	-	-	-	-
	9:55		Middle	1.5	20.40	20.40	20.4	8.38	8.38	8.4	29.56	29.56	29.6	70.1	69.6	69.9	5.31	5.28	5.30
	-		Bottom	-	-	-	-	-	-	-	-	-	-	-	-	-	-	-	-
23/12/2015	-	Fine	Surface	-	-	-	-	-	-	-	-	-	-	-	-	-	-	-	-
	10:50		Middle	1.0	21.10	21.10	21.1	8.44	8.44	8.4	23.52	23.52	23.5	55.6	55.0	55.3	4.31	4.26	4.29
	-		Bottom	-	-	-	-	-	-	-	-	-	-	-	-	-	-	-	-
26/12/2015	-	Cloudy	Surface	-	-	-	-	-	-	-	-	-	-	-	-	-	-	-	-
	2:58		Middle	1.0	19.40	19.40	19.4	8.12	8.12	8.1	23.64	23.64	23.6	49.9	50.9	50.4	3.96	4.06	4.01
	-		Bottom	-	-	-	-	-	-	-	-	-	-	-	-	-	-	-	-

Remarks:  
 Single underline denotes exceedance over Action Level.  
 Double underline denotes exceedance over Limit Level.



### Graphic Presentation of Enhanced Water Monitoring Results (DO) at C6 - Excelsior Hotel





### Graphic Presentation of Enhanced Water Monitoring Results (DO) at Ex-WPCWA SW - South-western corners of ex-Public Cargo Works Area

